

# RSM Parts Catalogue

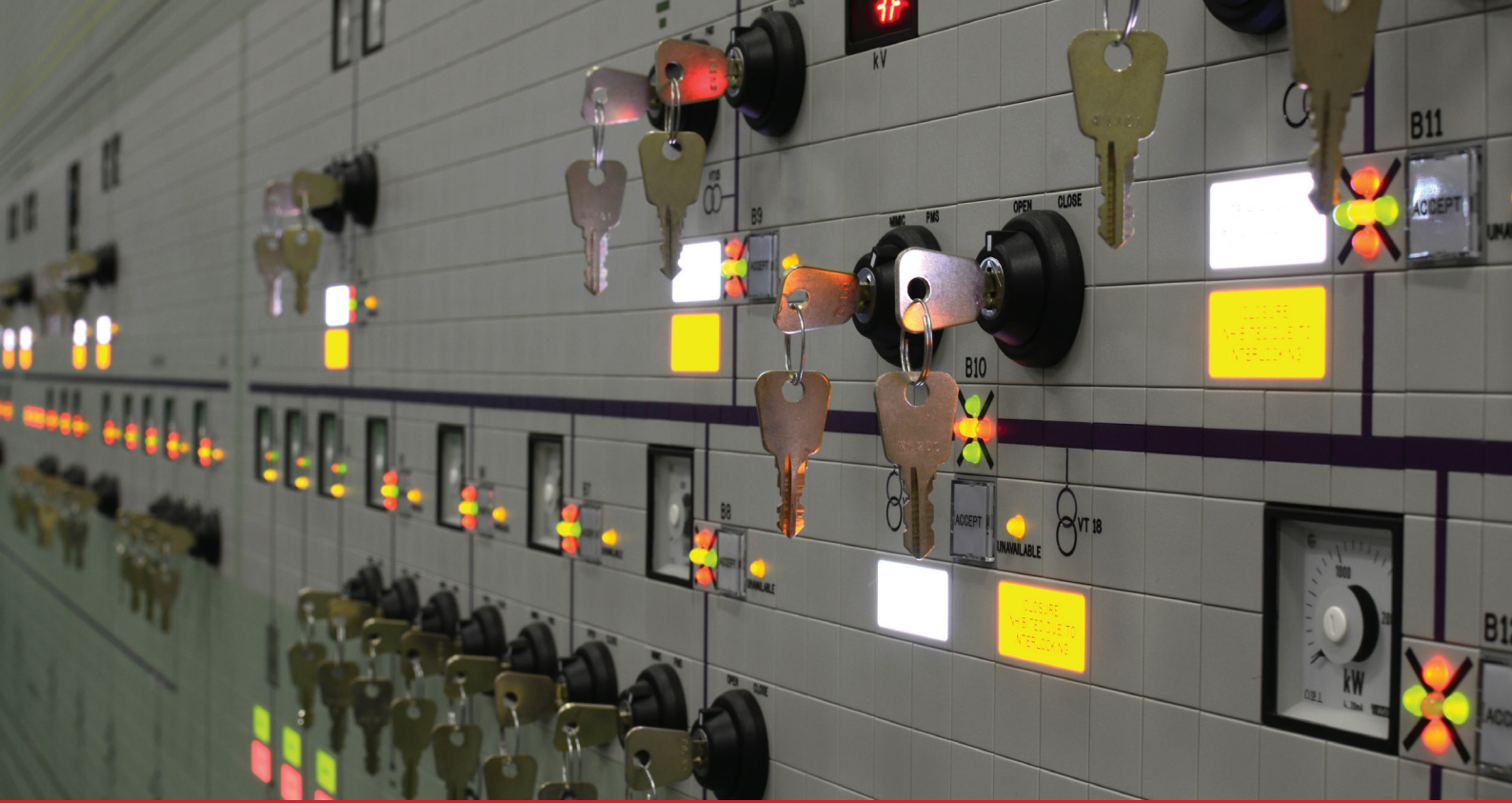


# WE INNOVATE TO SOLVE GLOBAL INFRASTRUCTURE CHALLENGES

## CONTENTS

About L.B. Foster	03
How to Order	04
Tiles & LED Printed Circuit Boards	06
Single Colour LEDs	10
Push Buttons & Push/Pull Buttons	12
Selector Switches	16
Miscellaneous Parts & Specialist Tools	18





# About L.B. Foster

L.B. Foster is a specialist, end-to-end supplier to the Global Rail sector. We focus on innovation, creating leading edge engineering and digital communication technology solutions for the rail, infrastructure, and the built environment.

As a leading manufacturer of rail signalling control panels for Network Rail, we deliver cutting-edge solutions designed for reliability and efficiency. Our expertise lies in upgrading and maintaining existing signalling panels by replacing outdated components with innovative, future-proof technologies. This catalogue showcases our advanced solutions, ensuring seamless integration and long-term performance for the rail network.

When you choose to partner with L.B. Foster, you're not just selecting a vendor; you're aligning with a trusted global leader renowned for its commitment to excellence and superior performance.

Explore the full spectrum of L.B. Foster's cutting-edge technologies & solutions and discover our comprehensive products range by visiting our website: **[lbfooster.com](https://lbfooster.com)**.

# How to order

Ordering replacement components from Rail Signalling Control Panel Parts Catalogue is simple and convenient. Follow these three steps to ensure a smooth and efficient process.

## Step 1: Identify Replacement Components

Browse this catalogue to find components you need. If you're unsure which component is right for your signalling control panel, just send us a clear picture at **SCRailParts@lbfoster.com**, and our friendly technical experts will be happy to help. Can't find what you are looking for? Please call **0115 840 0500**, and we'll assist you with your requirements.



## Step 2: Create Your Components List

Once you've identified the components, put together a list with the part number and the quantity you need.

**PART NUMBER:**  
TEW-40-9P

**Example format:** Part Number: TEW-40-9P Quantity: 3

For multiple components, ensure that each part reference number is clearly stated alongside the quantity required.

## Step 3: Send Us Your Order

Email your components list to **SCRailParts@lbfoster.com** and we'll take care of the rest! If you need an urgent replacement or immediate help with your signalling control panel, please reach out to our technical experts at **0115 840 0500**. We're here to assist you!

## What happens next?

Once we receive your order request, you'll get an order acknowledgment email confirming that we've received your order details. Within 24 hours, we'll send you a quotation along with the estimated lead times for your components, so you'll know exactly what to expect.

**Did you know we also offer routine inspections and maintenance checks to keep your signalling panels at optimum condition? Email [SCRailParts@lbfoster.com](mailto:SCRailParts@lbfoster.com) to find out more.**



# Inspections and Maintenance Service

L.B. Foster can help keep your rail signalling control panels running smoothly with our routine Inspections and Maintenance Service.

We offer:

## Proactive Interventions

Detecting and addressing potential issues before they affect operations.

## Expert Recommendations

Bespoke advice and essential spare parts to maintain peak performance.

## Specialist Support

Guidance on repairing, replacing, or renewing components to manage damage or obsolescence.

## Maintenance Training

Providing training for your staff on servicing parts, including correct procedures for swapping buttons, switches and LEDs.

## Specialist Tools

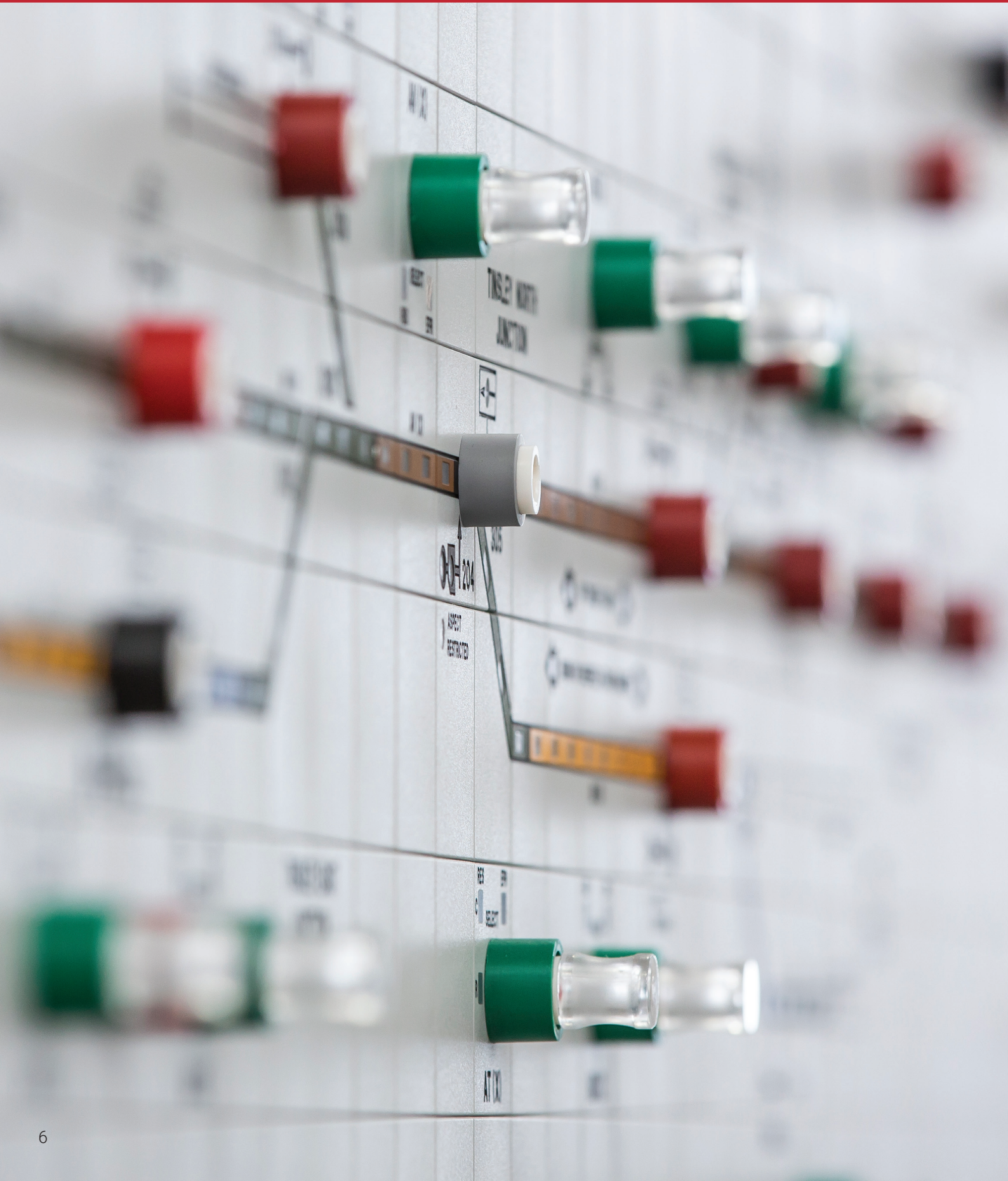
Supplying a list of recommended tools for safe and effective maintenance activities.

To find out more or arrange an inspection or maintenance visit, email one of our experts at [SCRailParts@lbfoster.com](mailto:SCRailParts@lbfoster.com)

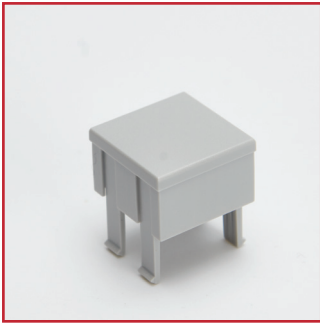




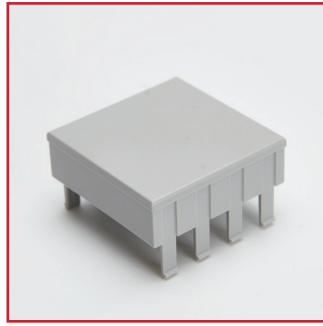
# TILES & LED PRINTED CIRCUIT BOARDS



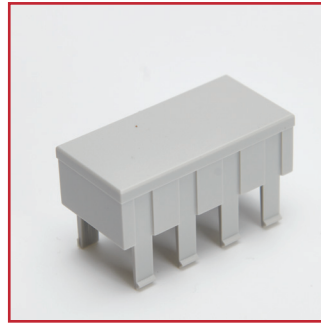




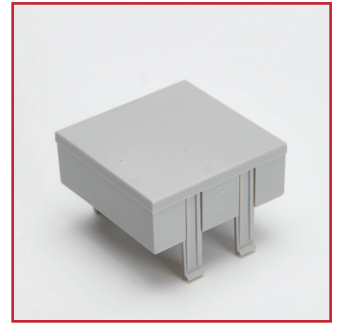
**PART NUMBER:**  
SU05-10-02 24MM



**PART NUMBER:**  
SU05-10-03 48MM



**PART NUMBER:**  
SU15-51-01  
24X48MM



**PART NUMBER:**  
SU40-12-04 40MM



**PART NUMBER:**  
SWISSINCO 48MM



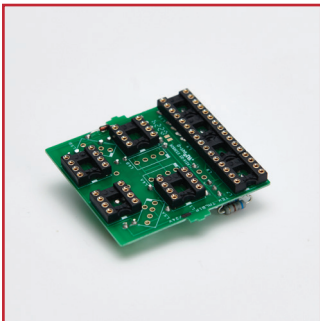
**PART NUMBER:**  
M241276



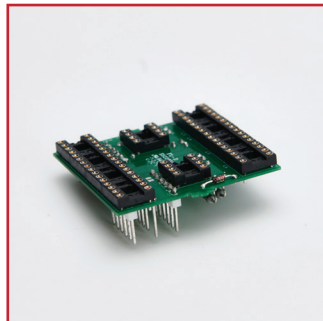
**PART NUMBER:**  
10-33-05



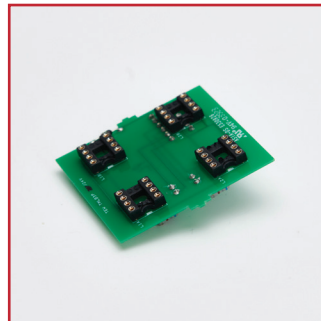
**PART NUMBER:**  
10-33-06



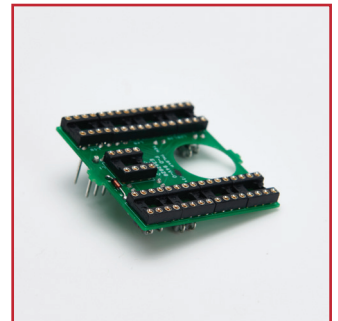
**PART NUMBER:**  
TMLB1P-12/24V DC



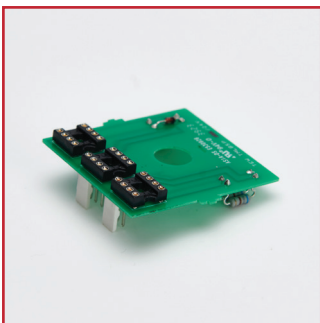
**PART NUMBER:**  
TMLB2P-12/24V DC



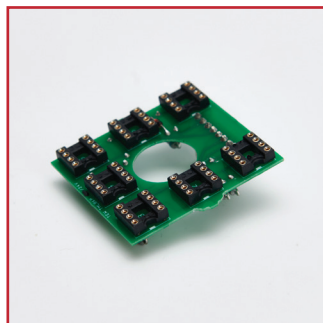
**PART NUMBER:**  
TMLB3P-12/24V DC



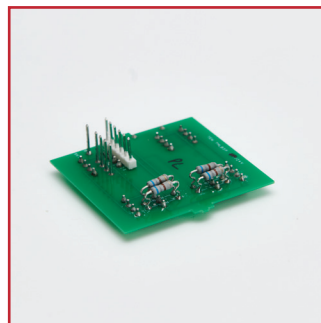
**PART NUMBER:**  
TMLB4P-12/24V DC



**PART NUMBER:**  
TMLB5P-12/24V DC



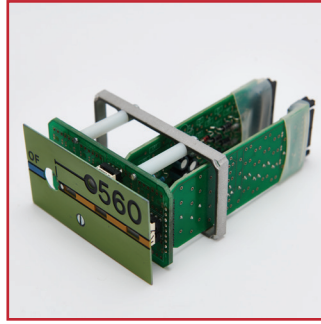
**PART NUMBER:**  
TMLB6P-12/24V DC



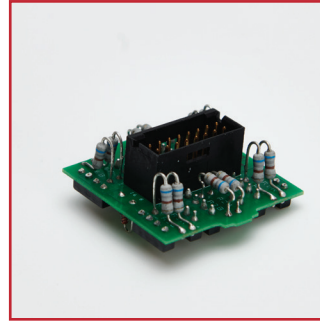
**PART NUMBER:**  
TMLB7P-12/24V DC



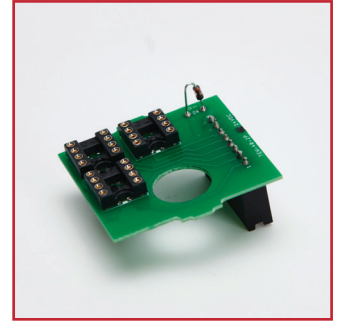
**PART NUMBER:**  
40X80 PCB UNIT



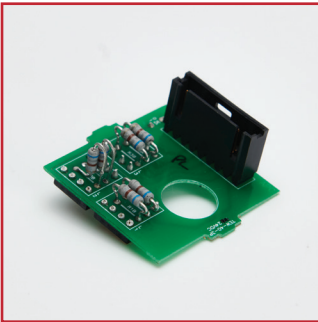
**PART NUMBER:**  
40X80 PCB UNIT C/W  
TILE



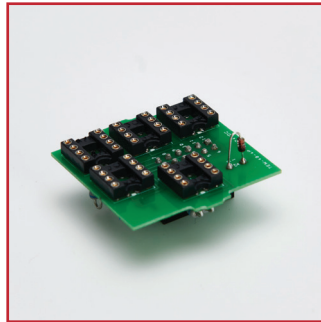
**PART NUMBER:**  
TEW-40-1P



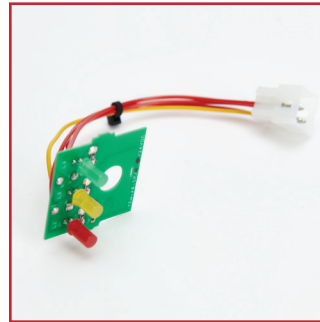
**PART NUMBER:**  
TEW-40-2P



**PART NUMBER:**  
TEW-40-3P



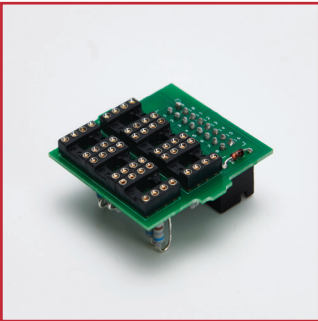
**PART NUMBER:**  
TEW-40-4P



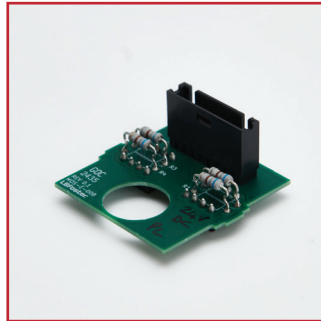
**PART NUMBER:**  
TEW-40-5P/N -  
12/24V AC/DC



**PART NUMBER:**  
TEW-40-6P



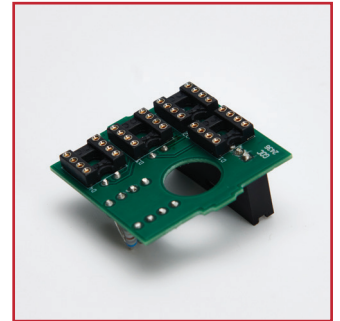
**PART NUMBER:**  
TEW-40-7P



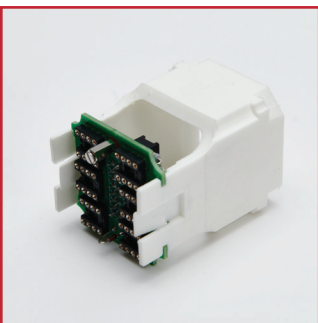
**PART NUMBER:**  
TEW-40-8P



**PART NUMBER:**  
TEW-40-9P



**PART NUMBER:**  
TEW-40-10P



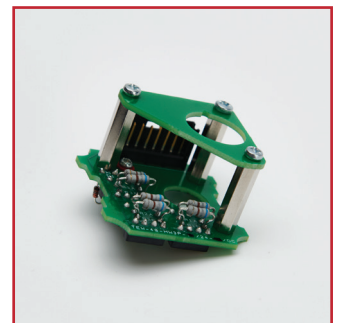
**PART NUMBER:**  
TEW-40-HW1 C/W  
DUMMY DIE



**PART NUMBER:**  
TEW-40-HW2 C/W  
DUMMY DIE

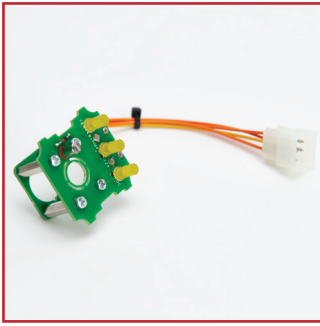


**PART NUMBER:**  
TEW-40-HW3 C/W  
DUMMY DIE

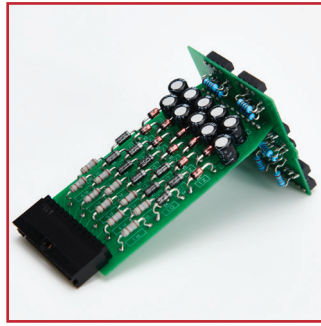


**PART NUMBER:**  
TEW-40-HW3 -  
12/24V AC/DC

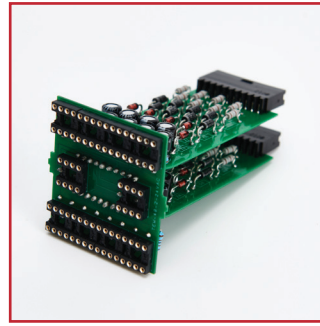




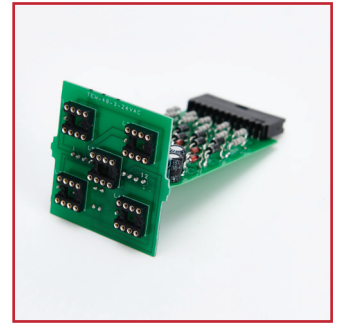
**PART NUMBER:**  
TEW-40-HW4 -  
12/24V AC/DC



**PART NUMBER:**  
TEW-48-1-24V AC



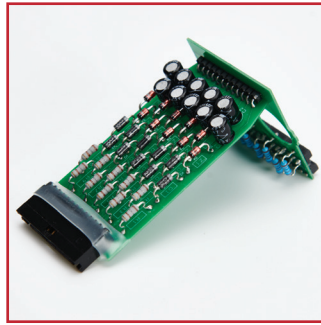
**PART NUMBER:**  
TEW-48-2-24V AC



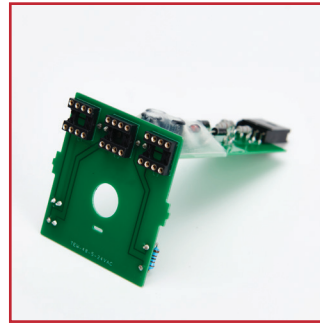
**PART NUMBER:**  
TEW-48-3-24V AC



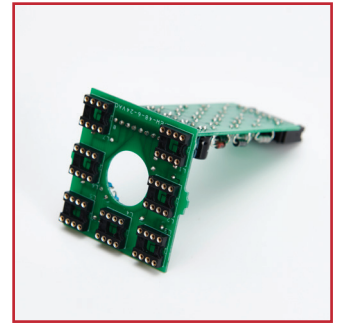
**PART NUMBER:**  
TEW-48-4A-24V AC



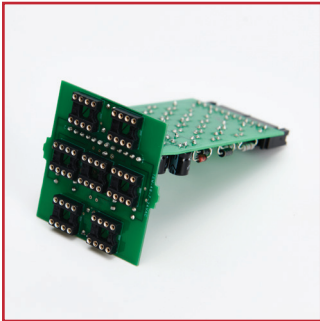
**PART NUMBER:**  
TEW-48-4B-24V AC



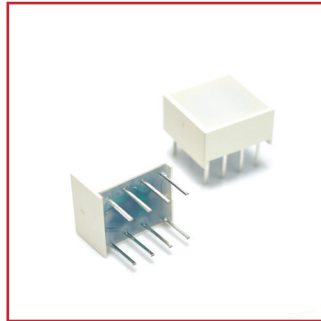
**PART NUMBER:**  
TEW-48-5-24V AC



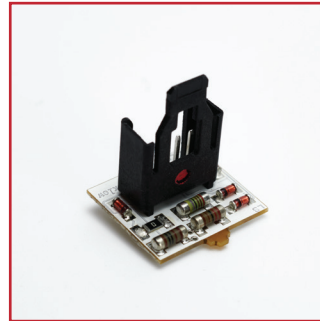
**PART NUMBER:**  
TEW-48-6-24V AC



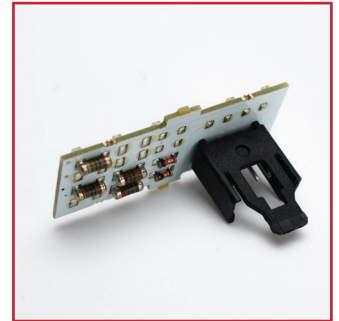
**PART NUMBER:**  
TEW-48-7-24V AC



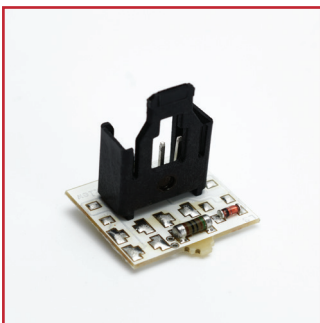
**PART NUMBER:**  
KB2965-EYW-B (R/Y)  
KB2965-EYW-B (R/G)



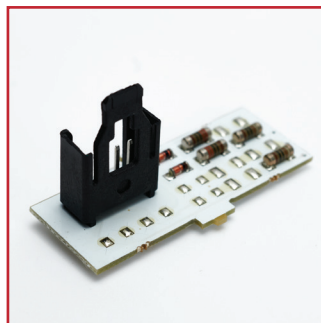
**PART NUMBER:**  
SU80-00-50



**PART NUMBER:**  
SU80-00-53



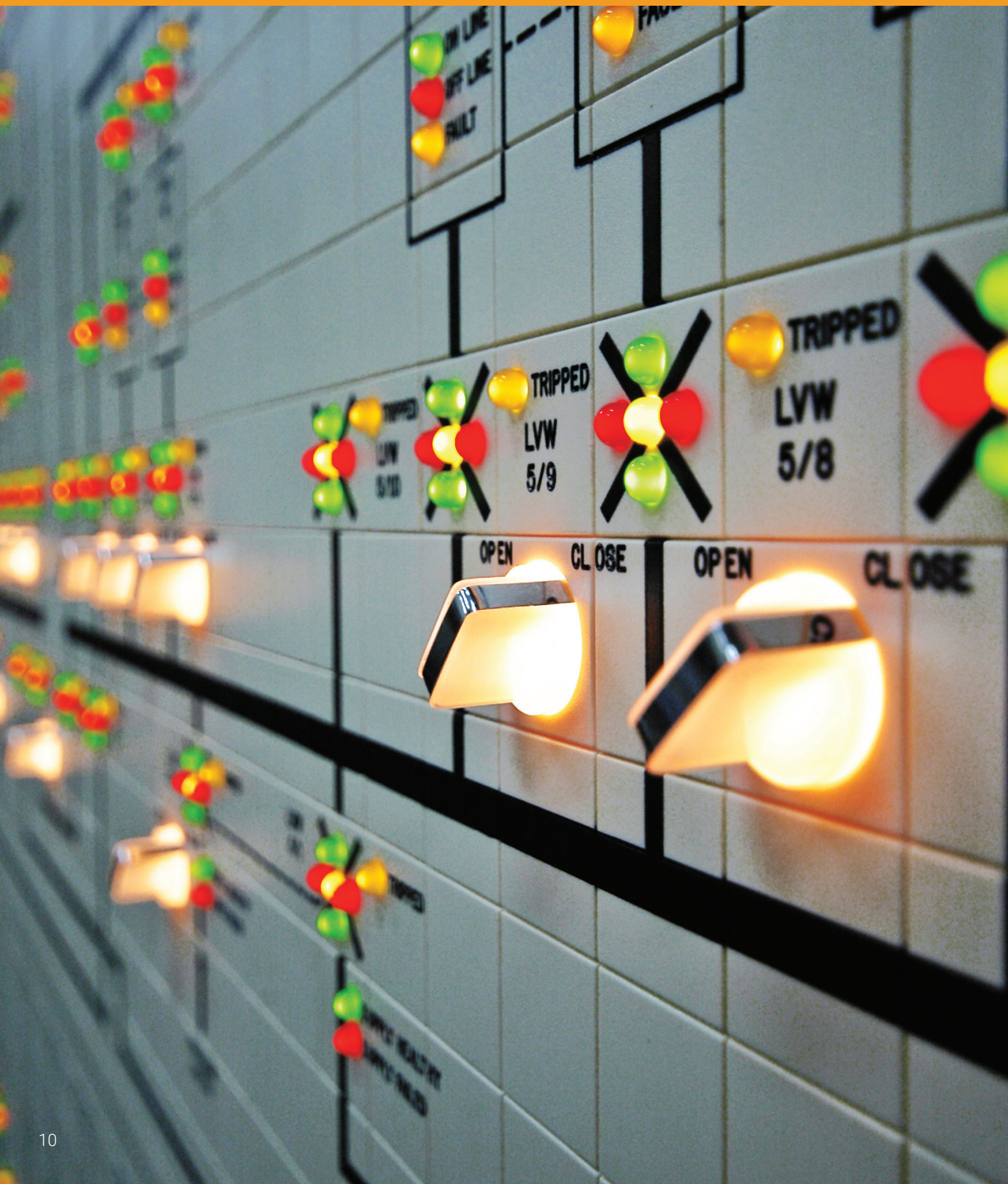
**PART NUMBER:**  
SU80-00-55



**PART NUMBER:**  
SU80-00-57



# SINGLE COLOUR LEDS







**PART NUMBER:**  
10-2J12-1062



**PART NUMBER:**  
10-2J12-1064



**PART NUMBER:**  
10-2J12-1069



**PART NUMBER:**  
247-1684



**PART NUMBER:**  
19050351 (24V DC)



**PART NUMBER:**  
19050352 (24V DC)



**PART NUMBER:**  
19050353 (24V DC)

# PUSH BUTTONS & PUSH/PULL BUTTONS







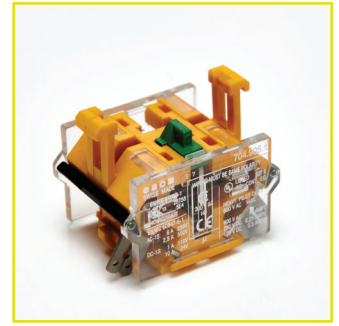
**PART NUMBER:**  
320-809



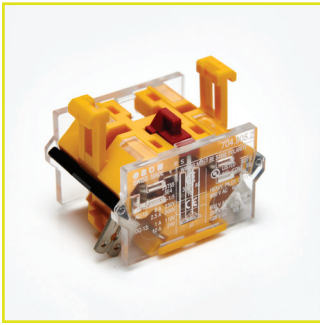
**PART NUMBER:**  
704.010.2



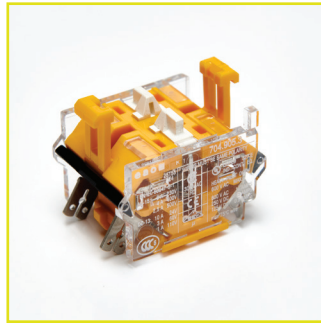
**PART NUMBER:**  
704.905.0



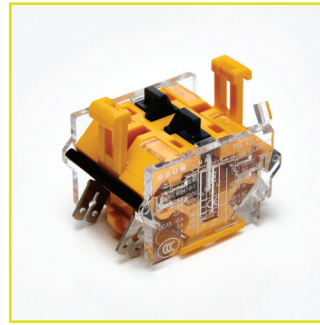
**PART NUMBER:**  
704.905.1 (1 N/O)



**PART NUMBER:**  
704.905.2 (1 N/C)



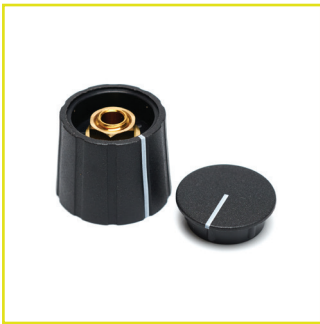
**PART NUMBER:**  
704.905.3 (2 N/O)



**PART NUMBER:**  
704.905.4 (2 N/C)



**PART NUMBER:**  
704.905.5  
(1 N/O + 1 N/C)



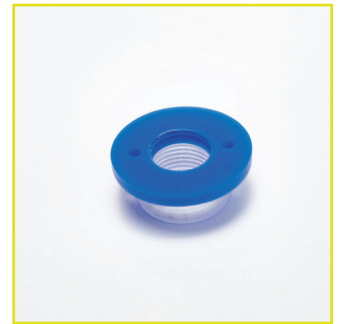
**PART NUMBER:**  
111-0704 / 225-984



**PART NUMBER:**  
51TEW0510\*\*\*\*



**PART NUMBER:**  
51TEW05E0\*\*\*\*



**PART NUMBER:**  
M241271/BU  
(48MM SYSTEM)



**PART NUMBER:**  
M241271/BN  
(48MM SYSTEM)



**PART NUMBER:**  
M241271/RD  
(48MM SYSTEM)



**PART NUMBER:**  
M241271/BK  
(48MM SYSTEM)



**PART NUMBER:**  
M241271/GN  
(48MM SYSTEM)



**PART NUMBER:**  
M241271/YE  
(48MM SYSTEM)



**PART NUMBER:**  
M241271/RD-YE  
(48MM SYSTEM)



**PART NUMBER:**  
M24187



**PART NUMBER:**  
M241037/A



**PART NUMBER:**  
M241037/C



**PART NUMBER:**  
M241037/D



**PART NUMBER:**  
M241037/E



**PART NUMBER:**  
M241037/F



**PART NUMBER:**  
M241037/L



**PART NUMBER:**  
M241037/N



**PART NUMBER:**  
M241037/O



**PART NUMBER:**  
M241037/R



**PART NUMBER:**  
M241037/S



**PART NUMBER:**  
M241037/EX



**PART NUMBER:**  
M241037/EN



**PART NUMBER:**  
M241037/NX1





**PART NUMBER:**  
M241037/NX2



**PART NUMBER:**  
M241037/NX3



**PART NUMBER:**  
M241037/BO



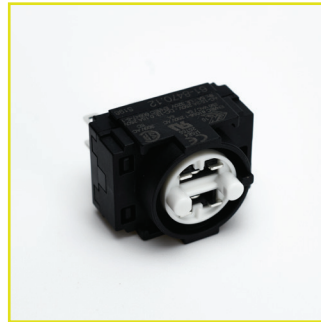
**PART NUMBER:**  
M241037/BR



**PART NUMBER:**  
61-9311.7



**PART NUMBER:**  
61-1110.0



**PART NUMBER:**  
61-8470.12



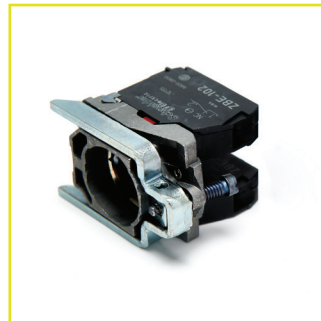
**PART NUMBER:**  
61-9830



**PART NUMBER:**  
ZB4 BCA



**PART NUMBER:**  
ZB4 BC44

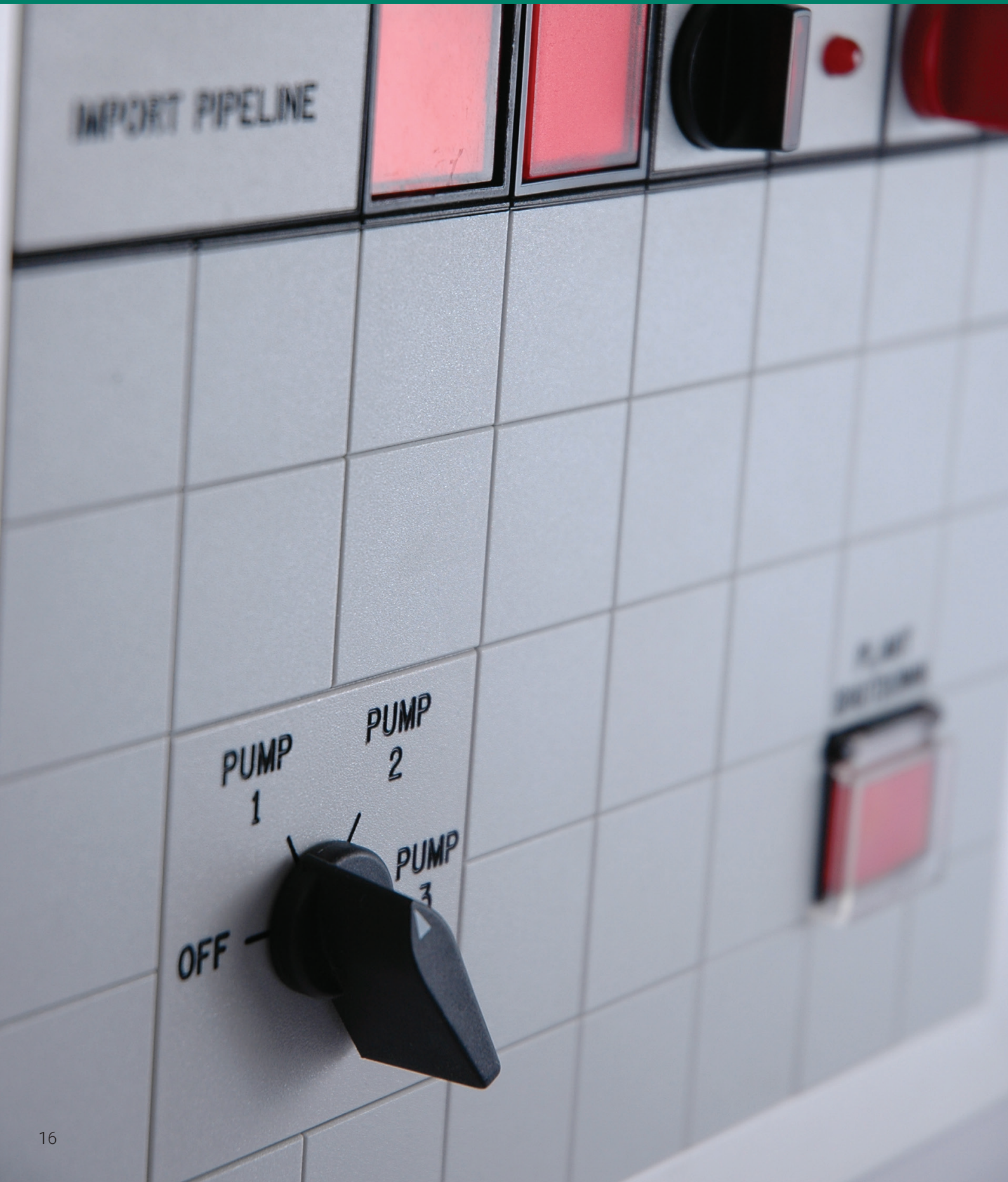


**PART NUMBER:**  
ZB4 BZ104



**PART NUMBER:**  
M241018/RD

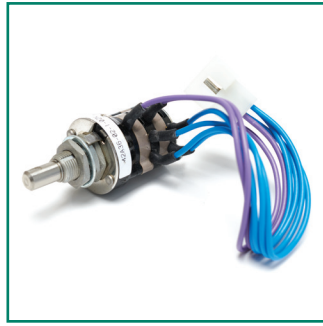
# SELECTOR SWITCHES







**PART NUMBER:**  
42A36-01-1-03N



**PART NUMBER:**  
42A36-02-1-02N



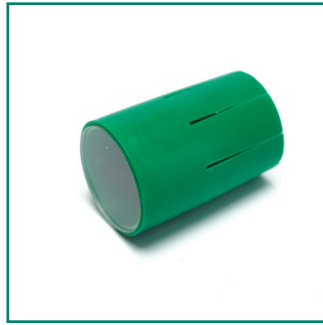
**PART NUMBER:**  
42A36-02-1-03N



**PART NUMBER:**  
42A60-01-1-02N



**PART NUMBER:**  
42A60-01-1-03N



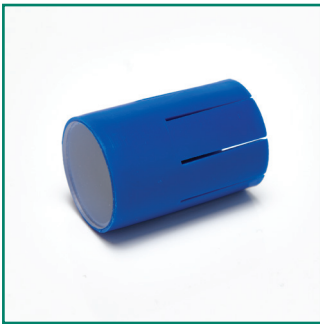
**PART NUMBER:**  
M241004/GN



**PART NUMBER:**  
M241004/YE



**PART NUMBER:**  
M241004/BK



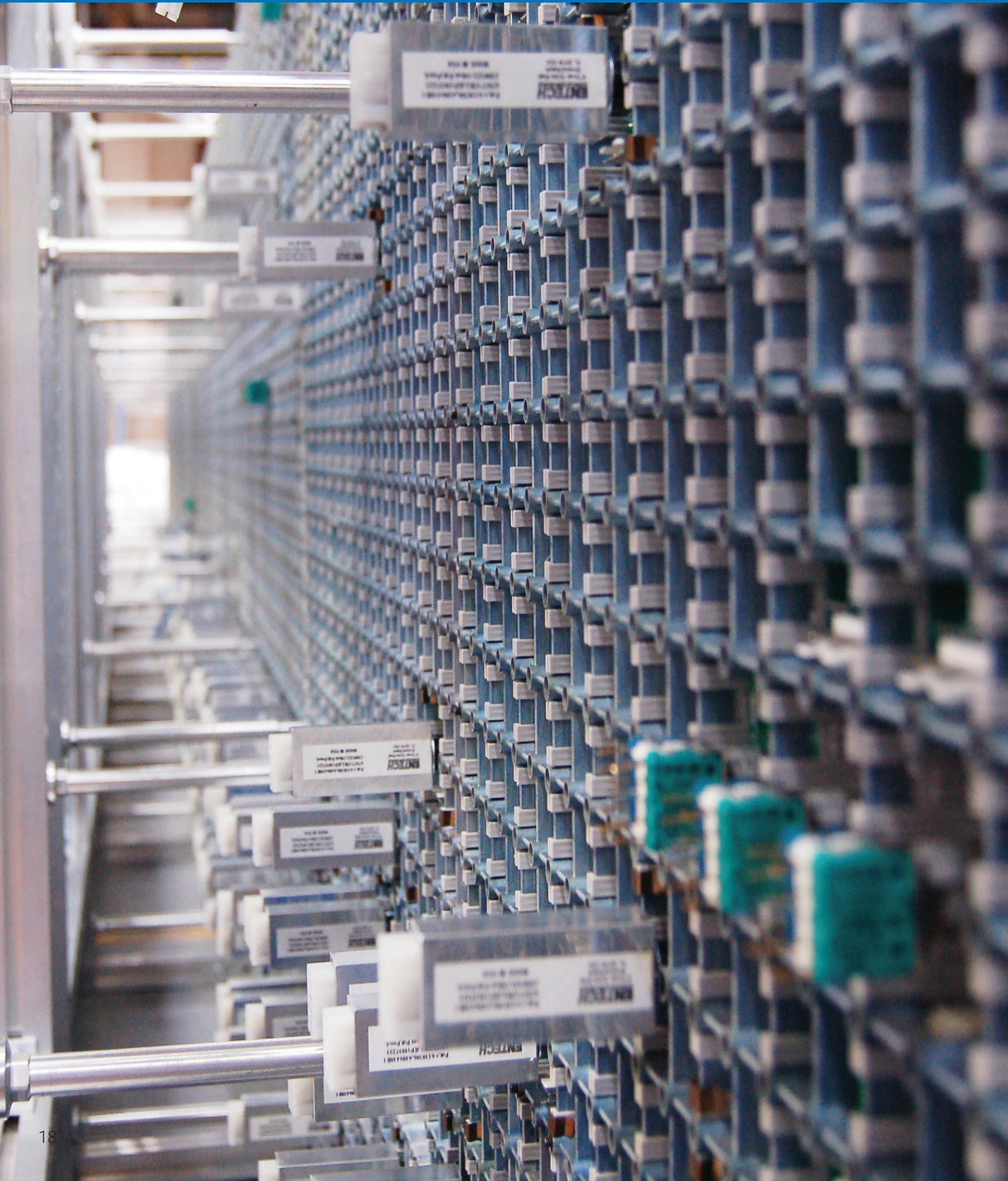
**PART NUMBER:**  
M2410041/BU



**PART NUMBER:**  
M2410041/RD



# MISCELLANEOUS PARTS & SPECIALITY TOOLS







**PART NUMBER:**  
430-091  
(9-28V DC/24V AC)



**PART NUMBER:**  
626-141  
(9-28V AC)



**PART NUMBER:**  
70-10-01



**PART NUMBER:**  
70-33-03



**PART NUMBER:**  
FAS4623



**PART NUMBER:**  
M241277



**PART NUMBER:**  
M241022



**For more information contact our Sales Team**

**L.B. Foster Services and Solutions**

6 The Midway, Lenton  
Nottingham, NG7 2TS

**t** +44 (0) 115 840 0500  
**e** [reply@lbfooster.com](mailto:reply@lbfooster.com)

**[lbfooster.com](http://lbfooster.com)**