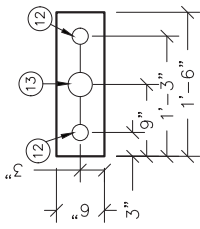
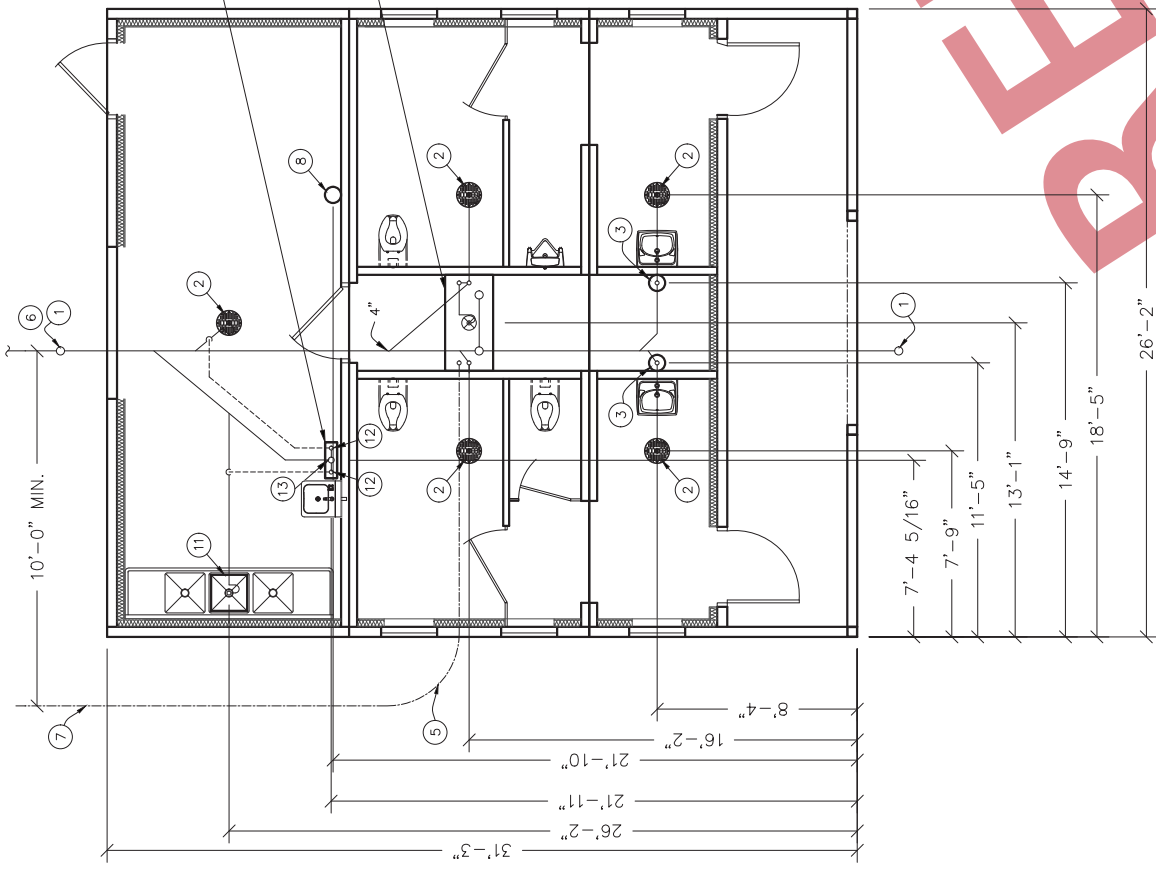


ALL PIPING INDICATED ON THIS SHEET IS NOT BY CXT

THIS DRAWING IS SUPPLIED FOR REFERENCE ONLY. PLEASE CONTACT CXT ENGINEERING DEPARTMENT FOR BUILDING SPECIFIC CONTROLLED DOCUMENTS PRIOR TO ANY FIELD WORK.

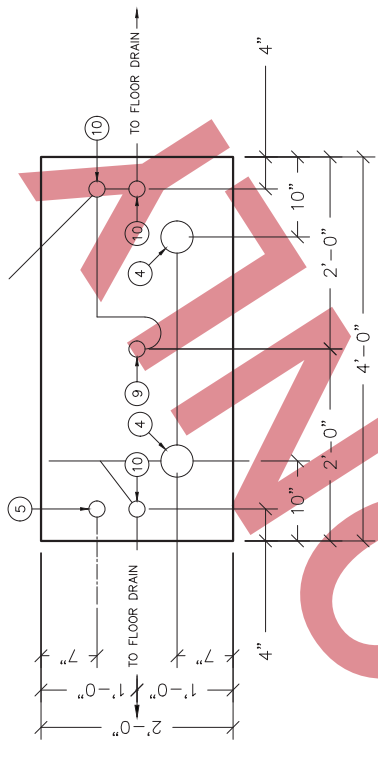


SEE 6" x 1'-6" BLOCKOUT DETAIL

6" x 1'-6" BLOCKOUT DETAIL

SEE 2'-0" x 4'-0" BLOCKOUT DETAIL

2'-0" x 4'-0" BLOCKOUT DETAIL



BELOW FLOOR PIPING - KEY NOTES

1. 4" CLEAN OUT TO GRADE.
2. 2" FLOOR DRAIN. FIELD INSTALLED TRAP SEAL (10" BLOCKOUT)
3. 2" VENT PIPES EXTENDED 12" ABOVE FINISHED FLOOR LEVEL, PROVIDE TEST PLUG. (8" BLOCKOUT)
4. 4" WASTE PIPE EXTENDED 12" ABOVE FINISHED FLOOR LEVEL, PROVIDE TEST PLUG. (2'-0" x 4'-0" BLOCKOUT)
5. 2" TYPE K OR L ANNEALED "SOFT" COPPER WATER SERVICE EXTENDED 12" ABOVE FINISHED FLOOR LEVEL, PROVIDE CAP AT END. (2'-0" x 4'-0" BLOCKOUT)
6. 30" MIN. BURY, PROVIDE TRACER TAPE.
7. MIN. BURY PER LOCAL REQUIREMENTS TO PROTECT AGAINST FREEZING AND DAMAGE.
8. ELECTRICAL STUB UP, (8" DIA BLOCKOUT)
9. 2" FLOOR DRAIN. FIELD INSTALLED TRAP SEAL (2'-0" x 4'-0" DIA BLOCKOUT)
10. 2" VENT PIPES EXTENDED 12" ABOVE FINISHED FLOOR LEVEL, PROVIDE TEST PLUG. (2'-0" x 4'-0" DIA BLOCKOUT).
11. 2" FLOOR SINK, NOT BY CXT (1'-6"x1'-6" BLOCKOUT).
12. 2" VENT PIPES EXTENDED 12" ABOVE FINISHED FLOOR LEVEL, PROVIDED TEST PLUGS (6"x18" BLOCKOUT).
13. 3" WASTE PIPE EXTENDED 12" ABOVE FINISHED FLOOR LEVEL, PROVIDED TEST PLUGS (6"x18" BLOCKOUT).

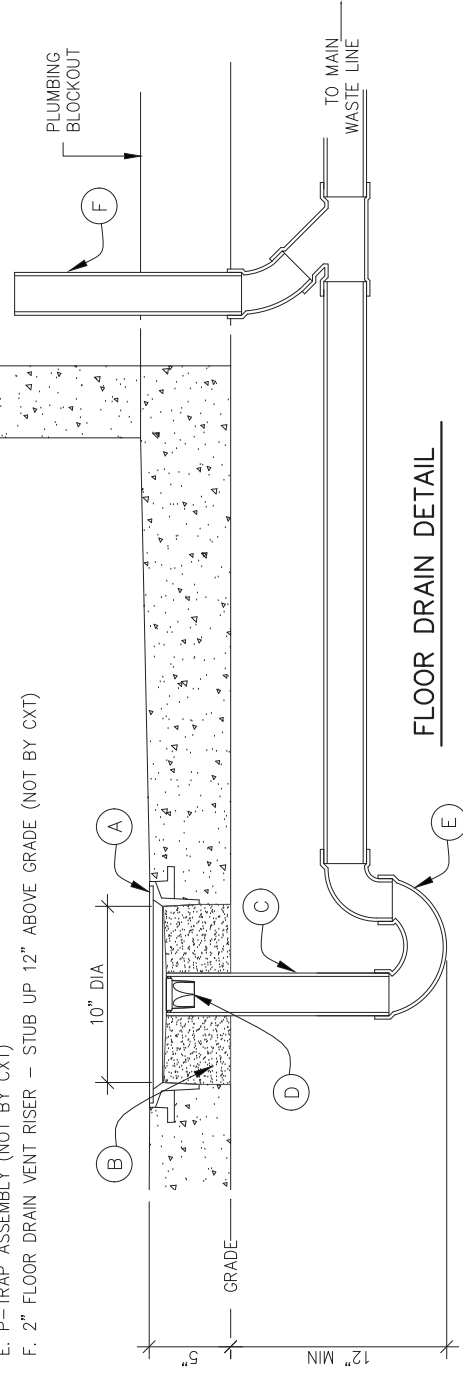
- A. CAST-IN DRAIN HOUSING (10" INSIDE DIM - PROVIDED BY CXT)
- B. FIELD INSTALLED GROUT, SLOPE TO DRAIN (CXT PROVIDED-INSTALLATION NOT BY CXT)
- C. 2" WASTE PIPE - STUB UP 12" ABOVE GRADE (NOT BY CXT)
- D. 2" TRAP SEAL PART# P26001 (CXT PROVIDED-INSTALLATION NOT BY CXT)
- E. P-TRAP ASSEMBLY (NOT BY CXT)
- F. 2" FLOOR DRAIN VENT RISER - STUB UP 12" ABOVE GRADE (NOT BY CXT)

FLOOR DRAIN BLOCKOUTS & BELOW FLOOR PIPING

NTS

PIPING LEGEND

- BELOW FLOOR WASTE PIPING; SCH 40 PVC; ASTM D2665, TYPE DW
- BELOW FLOOR VENT PIPING; SCH 40 PVC; ASTM D2665, TYPE DW
- 2" WATER SERVICE, ANNEALED "SOFT" COPPER; ASTM B88, TYPE "K" OR "L"



FLOOR DRAIN DETAIL



6701 E. Flamingo Ave. Bldg 300, Nampa ID 83857
901 N. Waco St., Hillsboro TX 78645
328 Weaverly Rd, Williamstown WV 26187

PROJECT TITLE
MALIBU
CXT STANDARD BUILDING

NOTICE
The information contained herein is proprietary and the reproduction or distribution of this information may only be used by the original recipient for the purpose intended. Reproduction or distribution of this information is strictly prohibited without the prior written consent of CXT Incorporated. By allowing use of this information, CXT Incorporated, warrants the accuracy of this information, including a warranty of merchantability or of fitness for a particular purpose.
CXT Incorporated

REV.	DESCRIPTION	DATE	APPROVAL	DATE
1	1/8" 11'-0"	10/05/23		
DRAWN	G. SCHUETTE	FILE NO.	MB-019	
CHECKED	N. PENNER	PLOT	96	

FLOOR DRAIN LOCATIONS & BELOW FLOOR PIPING

DWG. NO.	MB-39	SHEET	39	REV.	0
			45		