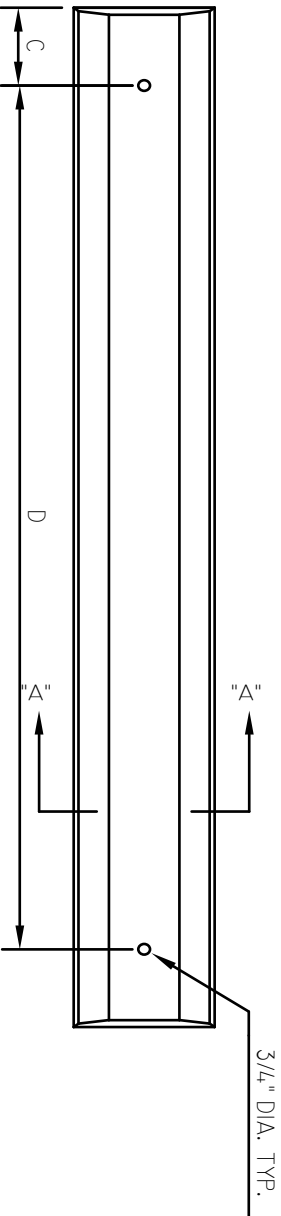
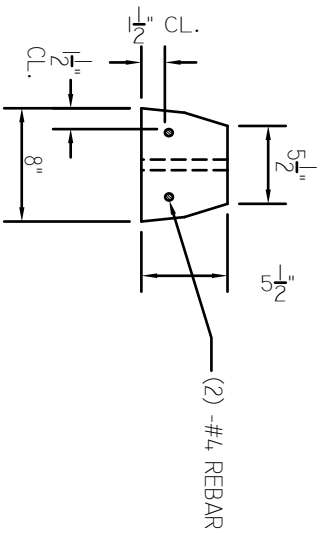


SIDE VIEW



TOP VIEW

INVENTORY NUMBER	CURB BUMPER SIZES	A	B	C	D	#4 BAR LENGTH	WEIGHT	CU YD.
CMCBXX0060	6' STANDARD CURB BUMPER	72"	71"	6"	60"	69"	235 LBS.	0.06
CMCBXX0080	8' STANDARD CURB BUMPER	96"	95"	6"	84"	93"	313 LBS.	0.08

CASTING TOLERANCES:
(WHERE APPLICABLE)

OVERALL LENGTH OR WIDTH
10 FT OR UNDER = $\pm 1/8"$
10 TO 20 FT = $\pm 1/8"$, $-3/16"$
20 TO 40 FT = $\pm 1/4"$

TOTAL THICKNESS = $-1/8"$, $+1/4"$

VARIATION FROM SQUARE = $\pm 1/8"$ PER 6 FT OF DIAGONAL

LOCAL SMOOTHNESS = $1/4"$ IN 10 FT

SWEEP = $\pm 1/4"$

POSITION OF TENDONS = $\pm 1/4"$

POSITION OF BLOCKOUTS = $\pm 1/4"$

SIZE OF BLOCKOUTS = $\pm 1/4"$

POSITION OF EMBEDS = $\pm 1/4"$

TIPPING & FLUSHNESS OF PLATES = $\pm 1/16"$, $-1/4"$

LIFTING = $\pm 1/2"$

END SQUARENESS = $\pm 1/8"$

CURB BUMPERS		DWG. NO.	6
CUSTOMER		5	5
PROJECT NAME		4	4
PROJECT LOCATION		3	3
DRAWN BY: BLK		2	ADDED TOLERANCE CHART
DATE: 11/18/2016		1	ADDED INVENTORY NUMBER
CHECKED BY: HMC		1	DATE
CHECKED DATE: 01/25/2019			



1-800-837-8918

TELEPHONE (502) 464-4441
WABER, X. WV 26184-0265