

**LB**Foster®



## **Anti-Trespass Panels**

An essential safety solution  
for rail crossings, platforms and  
rail yard entrances

# Anti-Trespass Panels

## An essential safety solution for rail crossings, platforms and rail yard entrances

**L.B. Foster's Anti-Trespass panels deter and protect the safety of pedestrian trespass at rail crossings, platforms and yard entrances.**

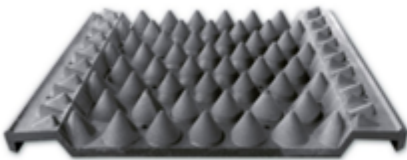
L.B. Foster's anti-trespass panels are designed and engineered by Rosehill Rail and have been developed for over a decade from feedback by rail operators worldwide. Demand for these panels have become increasingly popular in the UK, Holland, France, Belgium, Turkey, Australia, Portugal and in the US.

The newly redesigned panels are available in three styles providing greater flexibility to site specific requirements. Designed and engineered to minimize installation time, the anti-trespass panel system provides a better solution to meet the requirements of railway administrations worldwide.

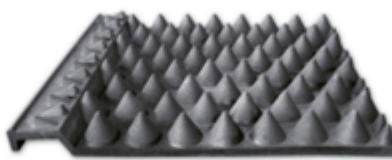
Made from 100% recycled rubber, these panels are truly environmentally friendly. All panels are delivered complete with plastic 'planks' and fixing screws to enable immediate installation.

Extra fixing kits are available (in addition to those automatically supplied with each panel). Each kit comprises of 2 'planks' made from recycled plastic together with 8 fixing screws and washers.

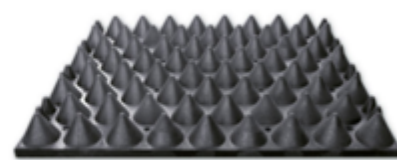
### SYSTEM OVERVIEW



DOUBLE FLANGE - STANDARD



SINGLE FLANGE



FLANGELESS / FLAT

### Benefits

- > Designed to deter trespassers and animals from accessing the track
- > Recent FRA report indicates up to a 38% reduction in trespassing
- > Simple and quick to install
- > Effective at securing rail yard entrances
- > Fits any location (on or off-track including platform ends, etc.)

