

Precast Concrete Buildings FLUSH RESTROOMS

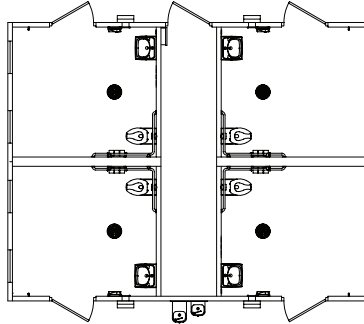


CXT® manufactures precast concrete restroom, shower, concession, and multipurpose buildings for use in parks, recreational areas, and education facilities throughout the United States and Canada.

Multiuser Restrooms

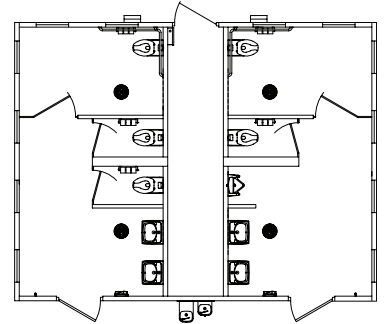
Arapahoe - 20' x 26'

Four Family Assist Flush Restrooms



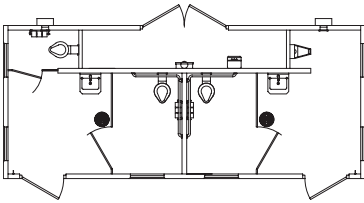
Taos - 20' x 26'

Two Multiuser Fully Accessible Flush Restrooms



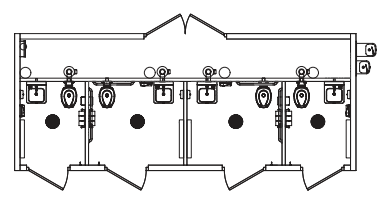
Dakota - 11' x 26'

Two Multiuser Fully Accessible Flush Restrooms



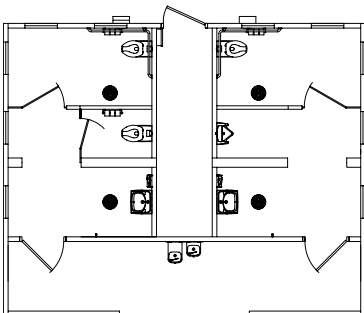
DK-4 - 11' x 26'

Four Single User Fully Accessible Flush Restrooms



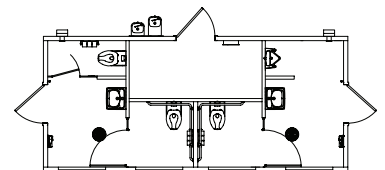
Montrose - 21' x 26'

Two Multiuser Fully Accessible Flush Restrooms



Kodiak - 10' 6" x 23' 8"

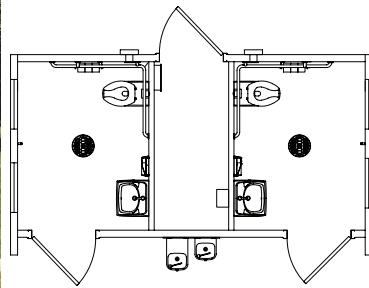
Two Multiuser Fully Accessible Flush Restrooms



Single User Restrooms

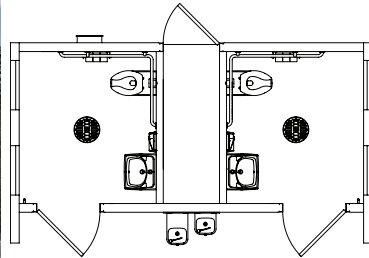
Cortez - 10' 3" x 17'

Two Single User Restrooms



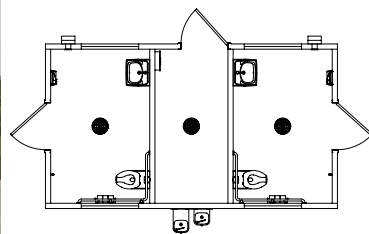
Denali - 10' 3" x 17'

Two Single User Restrooms



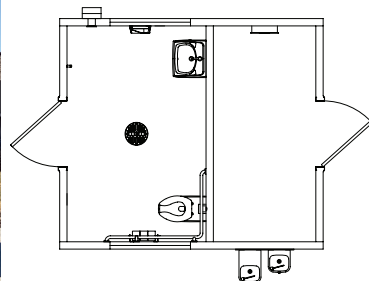
Ozark II - 10' 6" x 18' 8"

Two Single User Restrooms



Ozark I - 10' 6" x 12'

Unisex Restroom



> Simple to Install

Minimal site preparation is required and buildings can typically be in use on the day of installation.

> Ready to Use

Prefabricated and delivered complete and ready to use, including plumbing and electrical where applicable.

> Easy to Maintain

Interiors are designed to resist abusive wear and can be quickly cleaned with warm soapy water and a brush.

CXT buildings are delivered to your site ready to use and require minimal site preparation. Our structures are manufactured with high-strength precast concrete floors, walls, and roofs and can withstand extreme conditions caused by flood, snow, wind, and zone-4 seismic loads.

Utilities are pre-wired, pre-plumbed, and tested before shipment to ensure local code requirements are met.

Water, sewage and electrical utility lines are stubbed up through the prepared base material to match up with the utility blockout within the floor of the chase area. Hook up of the utility lines can be completed in a matter of hours.

All utility lines are concealed within the chase/storage area for easy hook up and maintenance, and to reduce vandalism.

Cooperative Contracts

GSA Contract #47QSWA23D009W

E&I Cooperative Services Contract #CR001294

Sourcwell Contract #052725-CXT

TIPS Contract #240202



■ 800.696.5766

■ sales@lbfooster.com

■ www.cxtinc.com