

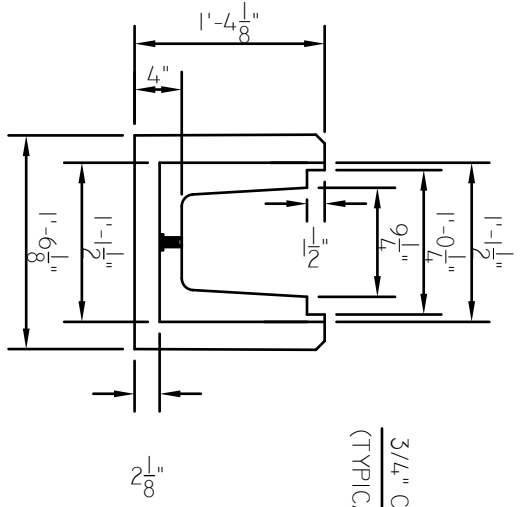
SIDE VIEW

TOP VIEW

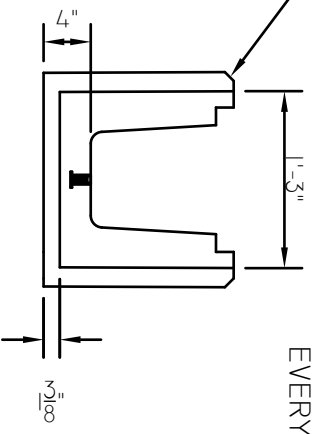
REINFORCING 5PCS. #4 REBAR  
 FULL LENGTH WITH #4 SADDLE  
 EVERY 18"

- NOTES:
1. COMPRESSIVE STRENGTH OF CONCRETE, AT 28 DAYS, (F'c) SHALL NOT BE LESS THAN 3,000 PSI
  2. ALL REINFORCING TO BE GRADE 60 UNCOATED REBAR.

SECTION "B-B"



SECTION "A-A"



PART #:	CMSMCP0090
WEIGHT	#1,822
CU YD.	0.450

BILL OF MATERIAL		
REQ'D	MATERIAL	LENGTH
5	#4 BAR	9'-6 1/2"
6	#4 SADDLE	
2	1/2" PENN LIFTING INSERT	

1-800-837-8918

PRECAST CONCRETE PRODUCTS  
 TELEPHONE (360) 666-4441  
 P.O. BOX 265  
 WAVERLY, WV 26184-0265

TRENCH DRAIN	CUSTOMER
PROJECT NAME	PROJECT LOCATION
CHECKED BY: KJK	CHECKED DATE: 03/23/2020
DRAWN BY: BLK	DATE: 03/23/2020

CASTING TOLERANCES: (WHERE APPLICABLE)		
OVERALL LENGTH OR WIDTH	±1/8"	
10 FT. OR UNDER	±1/8"	
10 TO 20 FT.	±3/16"	
20 TO 60 FT.	±1/4"	
TOTAL THICKNESS	-1/8", +1/4"	
VARIATION FROM SQUARE	±1/8" PER 6 FT. OF DIAGONAL	
LOCAL SMOOTHNESS	= 1/4" IN 10 FT	
SWEEP	= ±1/4"	
POSITION OF TENDONS	= ±1/4"	
POSITION OF BLOCKOUTS	= ±1/4"	
SIZE OF BLOCKOUTS	= ±1/4"	
POSITION OF EMBEDS	= ±1/4"	
TIPPING & FLUSHNESS OF PLATES	= +1/16", -1/4"	
LIFTING	= ±1/2"	
END SQUARENESS	= ±1/8"	
DWG. NO.	6	6
REV	DESCRIPTION	DATE
1	ADDED TOLERANCES & PART #	1/25/19
2	UPDATED B.O.M.	2/27/19
3	ADDED LIFTERS AND LOCATION	8/07/19
4	ADDED NOTES	3/23/20