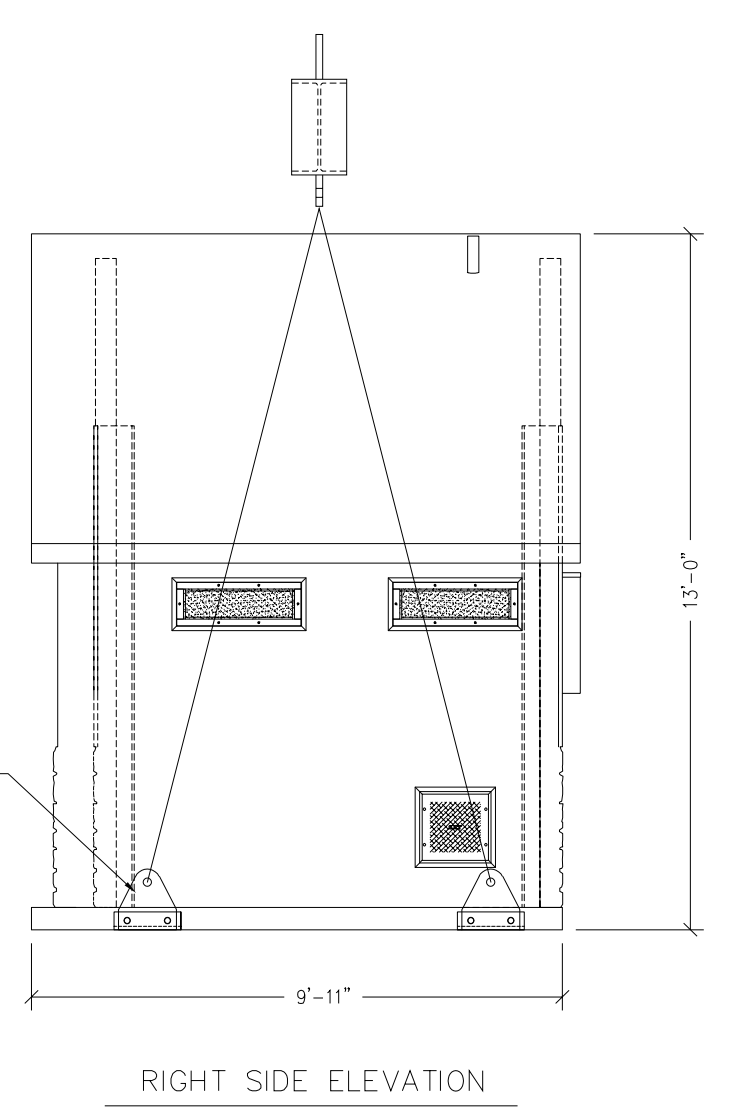


SOFTENER REQUIRED TO PREVENT SPALLING (TYP. 4 PLCS)

HOISTING CABLE SLINGS W/ LOCKING SHACKLE @ TOP MINIMUM CABLE TENSILE CAPACITY = 10 TON

PS-22 LIFTING EYE ATTACH TO AS-3 EMBEDS W/(2) 1 1/2" DIA. HIGH TENSILE COL BOLTS (SHEAR CAPACITY = 18,000# BOLT)



DENALI
Building Number DN-16
Typical Transport Configuration

- Notes:
1. RGN Trailer
 2. Tractor 5th wheel 18" forward of center axle.

ATS Projects
725 Opportunity Dr.
St. Cloud, MN 56301

CREATED BY
WER
CREATED DATE
2023-04-011

SIZE
D SCALE
NTS

REVISIONS
REV. 00

REV	DESCRIPTION	DATE
1	Notes	1-24-2023