



CXT® Incorporated manufactures restroom, shower and concession buildings in multiple designs, textures, and colors. The roof and walls are fabricated with high strength precast concrete to meet all local building codes and textured to match local architectural details. All CXT buildings are designed to meet A.D.A. and to withstand heavy snow, high wind, and category E seismic loads. All concrete construction also makes the buildings easy to maintain and withstand the rigors of vandalism. The buildings are prefabricated and delivered complete and ready-to-use, including plumbing and electrical where applicable. With thousands of satisfied customers nationwide, CXT is the leader in prefabricated concrete restrooms.

GSA CONTRACT INFORMATION:

SCHEDULE TITLE:

056-Buildings and Building Material/Industrial Services and Supplies

FSC Group 54- Pre-engineered/Prefabricated Buildings and Structures

FSC CLASS: 5410

CONTRACT NUMBER: 47QSWA23D009W

CONTRACT PERIOD: September 18, 2023 through September 17, 2028

CONTRACTOR'S NAME ADDRESS TELEPHONE AND FAX NUMBER E-MAIL AND/OR WEBSITE ADDRESS:

CXT Incorporated
606 N. Pines Road, Suite 202
Spokane Valley, WA 99206
Toll free: 800-696-5766
Fax: 509-928-8270
E-mail: sales@lbfoster.com

CONTRACTOR'S ADMINISTRATION SOURCE: Gary Burger, director of commercial operations.

BUSINESS SIZE/TYPE: Other than small business.

DELIVERY INFORMATION: All prices F.O.B. Origin prepaid and added to invoice. CXT operates three (3) manufacturing plants in the United States and will deliver from the closest location on our carriers. Use the following chart to determine the origin.

F.O.B. 6701 E. Flamingo Avenue, Building 300, Nampa, ID 83687 applies to: AK, AZ, CA, CO, HI, ID, MT, ND, NV, OR, SD, UT, WA, WY.

F.O.B. 901 North Highway 77, Hillsboro, TX 76645 applies to AL, AR, AZ, CO, CT, DE, FL, GA, IA, IL, IN, KS, KY, LA, MA, MD, ME, MI, MN, MO, MS, NC, NE, NH, NJ, NM, NY, OH, OK, PA, PR, RI, SC, TN, TX, VA, VT, WI, WV.

F.O.B. 362 Waverly Road, Williamstown, WV 26183 applies to AL, CT, DE, FL, GA, IL, IN, KY, MA, MD, ME, MI, NC, NH, NJ, NY, OH, PA, PR, RI, SC, TN, VA, VT, WI, WV.

1a. TABLE OF AWARDED SPECIAL ITEM NUMBERS (SIN's) WITH APPROPRIATE CROSS-REFERENCE TO PAGE NUMBER(S):

SIN	DESCRIPTION
332311P	Precast concrete buildings including accessories and options.
OLM	Order Level Materials

1b. IDENTIFICATION OF THE LOWEST PRICED MODEL NUMBER AND PRICE FOR EACH SIN: (Government net price based on a unit of one,

exclusive of any quantity/ dollar volume, prompt payment, or any other concession affecting price).

SIN	MODEL/DESCRIPTION	NET GSA PRICE
332311P	Gunnison/Single Vault	\$22,825.99

- 1c. HOURLY RATES: N/A
- 2. MAXIMUM ORDER PER SIN 332311P: Zero.
- 3. MINIMUM ORDER: None.
- 4. GEOGRAPHIC COVERAGE (delivery area): The 50 states, D.C., Puerto Rico, and U.S. territories.
- 5. POINT(S) OF PRODUCTION:
 - CXT Incorporated, 901 North Highway 77, Hillsboro TX 76645, Hill County.
 - CXT Incorporated, 6701 E. Flamingo Avenue, Building 300, Nampa, ID 83687, Canyon County.
 - CXT Incorporated, 362 Waverly Road, Williamstown, WV 26183, Wood County.
- 6. DISCOUNT FROM LIST PRICES OR STATEMENT OF NET PRICE: Prices shown are net. Prices exclude all federal/state/local taxes. Tax will be charged where applicable if customer is unable to provide proof of exemption.
- 7. QUANTITY DISCOUNT(S): One percent (1%) additional on single orders \$250,000 to \$749,999. Two percent (2%) on single orders over \$750,000.
- 8. PROMPT PAYMENT TERMS: Payment to CXT by the purchaser shall be made net 30 days after the submission of the invoice to the purchaser. Interest at a rate equal to the lower of (i) the highest rate permitted by law; or (ii) 1.5% per month will be charged monthly on all unpaid invoices beginning the 35th day (includes (five) 5-day grace period) from the date of the invoice. Under no circumstances can a retention be taken and purchaser shall pay the full invoiced amount without offset or reduction.
- 9a. NOTIFICATION THAT GOVERNMENT PURCHASE CARDS ARE ACCEPTED BELOW THE MICROPURCHASE THRESHOLD: Visa, MasterCard, and American Express.
- 9b. NOTIFICATION WHETHER GOVERNMENT PURCHASE CARDS ARE ACCEPTED OR NOT ACCEPTED ABOVE THE MICROPURCHASE THRESHOLD: Visa, MasterCard accepted above the micropurchase threshold.
- 10. FOREIGN ITEMS: None.
- 11a. TIME OF DELIVERY: 120 days ARO.
- 11b. EXPEDITED DELIVERY: Contact vendor.
- 11c. OVERNIGHT AND 2-DAY DELIVERY: None.



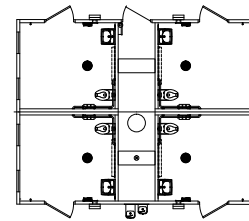
- 11d. URGENT DELIVERY: None.
12. FOB POINT(S): FOB origin -prepay and add.
- 13a. ORDERING ADDRESS(ES): CXT Incorporated, 606 N. Pines Road, Suite 202, Spokane Valley, WA 99206.
- 13b. ORDERING PROCEDURES: Fax GSA Purchase Order to (509) 928-8270.
14. PAYMENT ADDRESS(ES):
Remitting by check:
CXT, Inc., PO Box 676208, Dallas, TX 75267-6208
Remitting by ACH or wire transfer:
Beneficiary: CXT, Inc. Beneficiary Bank: PNC Bank, Pittsburgh, PA Account: 1077766885 ABA/Routing: 043000096 Email remittance details to AR@lbfoster.com
15. WARRANTY PROVISIONS: CXT provides a one (1) year warranty. The warranty is valid only when concrete is used within the specified loadings. Furthermore, said warranty includes only the related material necessary for the construction and fabrication of said concrete components. All other non-concrete components will carry a one (1) year warranty. CXT warrants that all goods sold pursuant hereto will, when delivered, conform to specifications set forth above. Goods shall be deemed accepted and meeting specifications unless notice identifying the nature of any non-conformity is provided to CXT in writing within the specified warranty. CXT, at its option, will repair or replace the goods or issue credit for the customer provided CXT is first given the opportunity to inspect such goods. It is specifically understood that CXT's obligation hereunder is for credit, repair, or replacement only, F.O.B. CXT's manufacturing plants, and does not include shipping, handling, installation or other incidental or consequential costs unless otherwise agreed to in writing by CXT.
16. EXPORT PACKING CHARGES: N/A
17. TERMS AND CONDITIONS OF GOVERNMENT PURCHASE CARD ACCEPTANCE: Government purchase cards will be accepted on all orders.
18. TERMS AND CONDITIONS OF RENTAL, MAINTENANCE AND REPAIR (IF APPLICABLE): N/A
19. TERMS AND CONDITIONS OF INSTALLATION (IF APPLICABLE): Customers are responsible for marking exact location building is to be set; providing clear and level site, free of overhead and/or underground obstructions; and providing site accessible to normal highway trucks and sufficient area for the crane to install and other equipment to perform the contract requirements. Site must allow for the crane to be within three feet of the building location and the truck to be within three feet of the crane. Customer shall provide notice in writing of low bridges, roadway width or grade, unimproved roads, or any other possible obstacles to access. CXT reserves the right to charge the customer for additional costs incurred for special equipment required to perform delivery and installation. Customer is responsible for all building permits required and compliance with Davis-Bacon Requirements. Customers will negotiate installation on a project-by-project basis, which shall be priced as separate line items. For more information regarding installation and truck turning radius guidelines please see our website at www.cxtinc.com.
- 20a. TERMS AND CONDITIONS OF REPAIR PARTS INDICATING DATE

- OF PARTS PRICE LISTS AND ANY DISCOUNTS FROM LIST PRICES (IF APPLICABLE): List of repair parts available upon request.
- 20b. TERMS AND CONDITIONS FOR ANY OTHER SERVICES (IF APPLICABLE): N/A
- 21 LIST OF SERVICE AND DISTRIBUTION POINTS (IF APPLICABLE): N/A
22. LIST OF PARTICIPATING DEALERS (IF APPLICABLE): N/A
23. PREVENTATIVE MAINTENANCE: Maintenance manuals available online at www.cxtinc.com. Printed manuals available by request by calling (800) 696-5766.
- 24a. SPECIAL ATTRIBUTES SUCH AS ENVIRONMENTAL ATTRIBUTES: N/A
- 24b. SECTION 508 COMPLIANCE: N/A
25. DATA UNIVERSAL NUMBER SYSTEM (DUNS) NUMBER: 157004896. UEI NUMBER: MLC1FHL356S9.
26. NOTIFICATION REGARDING REGISTRATION IN CENTRAL CONTRACTOR REGISTRATION (CCR) DATABASE: Cage Code OGA05.



ARAPAHOE – 20' x 26'

Arapahoe with chase has four family assist fully accessible flush restrooms. Standard features include simulated barnwood textured walls, simulated cedar shake textured roof, vitreous china fixtures, 30-gallon water heater, interior and exterior lights, off loaded, and set up at site.



CXT
800.696.5766
cxtinc.com

		Price Per Unit	
Base Price		\$	\$
OLM Items		Click to Select	
Final Connection to Utilities (per section)		\$	
Optional Wall Texture (per section) - <i>choose one</i>	Split Face Block Stone		
Optional Roof Texture (per section)	Ribbed Metal	\$	
Insulation and Heaters (per section)		\$	
Stainless Steel Water Closet (each)	Qty:	\$	
Stainless Steel Lavatory (each)	Qty:	\$	
Electric Hand Dryer (each)	Qty:	\$	
Electronic Flush Valve (each)	Qty:	\$	
Electronic Lavatory Faucet (each)	Qty:	\$	
Paper Towel Dispenser (each)	Qty:	\$	
Toilet Seat Cover Dispenser (each)	Qty:	\$	
Sanitary Napkin Disposal Receptacle (each)	Qty:	\$	
Baby Changing Table (each)	Qty:	\$	
Skylight in Restroom (each)	Qty:	\$	
Marine Grade Skylight in Restroom (each)	Qty:	\$	
Marine Package (<i>excluding fiberglass doors and frames</i>) (per section)		\$	
Exterior Mounted ADA Drinking Fountain w/Cane Skirt (each)	Qty:	\$	
2K Anti-Graffiti Coating (per section)		\$	
Optional Door Closure (each)	Qty:	\$	
Fiberglass Entry and Chase Doors and Frames (each)	Qty:	\$	
Timed Electric Lock System (2 doors- does not include chase door) (each)	Qty:	\$	
Exterior Frostproof Hose Bib with Box (each)	Qty:	\$	
Total for Added Cost Options:		\$	
Custom Options:			\$
Engineering and State Fees:		\$	
Estimated One-Way Transportation Costs to Site (quote):		\$	
Estimated Tax:		\$	
Total Cost per Unit Placed at Job Site:		\$	

Estimated monthly payment on 5 year lease



This price quote is good for 60 days from date below, and is accurate and complete.

CXT Sales Representative _____ Date _____

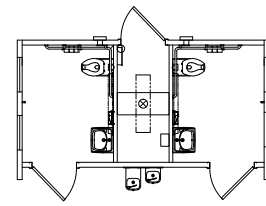
I accept this quote. Please process this order.

Company Name _____

Company Representative _____ Date _____

CORTEZ – 10' 3" X 17'

Cortez with chase has two single user fully accessible flush restrooms. Standard features include simulated barnwood textured walls, simulated cedar shake textured roof, vitreous china fixtures, interior and exterior lights, off loaded, and set up at site.



CXT
800.696.5766
cxtinc.com

*Base Price \$

OLM Sections

Restroom*	Qty: =	Shower*	Qty: =
Family Assist Shower/Restroom Combo*	Qty: =	Storage	Qty: =
Concession*	Qty: =		

*Includes 4-gallon water heater.

Total for Optional Sections \$

OLM Items

Item	Price per unit	Click to select
Final Connection to Utilities (per section)	\$	
Optional Wall Texture (per section)- <i>choose one</i>	Split Face Block Stone	
Optional Roof Texture (per section)	Ribbed Metal	
Insulation and Heaters (per section)	\$	
Stainless Steel Water Closet (each)	Qty: \$	
Stainless Steel Lavatory (each)	Qty: \$	
Electric Hand Dryer (each)	Qty: \$	
Electronic Flush Valve (each)	Qty: \$	
Electronic Lavatory Faucet (each)	Qty: \$	
Paper Towel Dispenser (each)	Qty: \$	
Toilet Seat Cover Dispenser (each)	Qty: \$	
Sanitary Napkin Disposal Receptacle (each)	Qty: \$	
Baby Changing Table (each)	Qty: \$	
Skylight in Restroom (each)	Qty: \$	
Marine Grade Skylight in Restroom (each)	Qty: \$	
Marine Package (excluding fiberglass doors and frames) (per section)	\$	
Exterior Mounted ADA Drinking Fountain w/Cane Skirt (each)	Qty: \$	
2K Anti-Graffiti Coating (per section)	\$	
Optional Door Closure (each)	Qty: \$	
Fiberglass Entry and Chase Doors and Frames (each)	Qty: \$	
Timed Electric Lock System (2 doors- does not include chase door) (each)	Qty: \$	
Exterior Frostproof Hose Bib with Box (each)	Qty: \$	

Total for Added Cost Options: \$

Custom Options: \$

Engineering and State Fees: \$

Estimated One-Way Transportation Costs to Site (quote): \$

Estimated Tax: \$

Total Cost per Unit Placed at Job Site: \$


Estimated monthly payment on 5 year lease

Disclaimer: Please call to confirm selected sections are compatible.

This price quote is good for 60 days from date below, and is accurate and complete.

CXT Sales Representative _____ Date _____

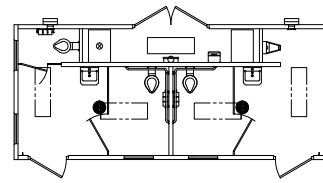
I accept this quote. Please process this order.


Company Name _____

Company Representative _____ Date _____

DAKOTA – 11' x 26'

Dakota with chase has two multiuser fully accessible flush restrooms. Standard features include simulated barnwood textured walls, simulated cedar shake textured roof, vitreous china fixtures, 4-gallon water heater, interior and exterior lights, off loaded, and set up at site.



CXT
800.696.5766
cxtinc.com


		Price Per Unit	
Base Price		\$	\$
OLM Items		Click to Select	
Final Connection to Utilities		\$	
Optional Wall Texture- <i>choose one</i>	Split Face Block Custom Texture		
Optional Roof Texture	Ribbed Metal	\$	
Stainless Steel Water Closet (each)	Qty:	\$	
Stainless Steel Lavatory (each)	Qty:	\$	
Stainless Steel Urinal (each)	Qty:	\$	
Electric Hand Dryer (each)	Qty:	\$	
Electronic Flush Valve (each)	Qty:	\$	
Electronic Lavatory Faucet (each)	Qty:	\$	
Electronic Urinal Valve (each)	Qty:	\$	
Paper Towel Dispenser (each)	Qty:	\$	
Toilet Seat Cover Dispenser (each)	Qty:	\$	
Sanitary Napkin Disposal Receptacle (each)	Qty:	\$	
Baby Changing Table (each)	Qty:	\$	
Skylight in Restroom (each)	Qty:	\$	
Marine Grade Skylight in Restroom (each)	Qty:	\$	
Marine Package (<i>excluding fiberglass doors and frames</i>)		\$	
Exterior Mounted ADA Drinking Fountain w/Cane Skirt (each)	Qty:	\$	
2K Anti-Graffiti Coating		\$	
Optional Door Closure (each)	Qty:	\$	
Fiberglass Entry and Chase Doors and Frames (each)	Qty:	\$	
Timed Electric Lock System (2 doors- does not include chase door) (each)	Qty:	\$	
Exterior Frostproof Hose Bib with Box (each)	Qty:	\$	
Total for Added Cost Options:		\$	
Custom Options:		\$	
Engineering and State Fees:		\$	
Estimated One-Way Transportation Costs to Site (quote):		\$	
Estimated Tax:		\$	
Total Cost per Unit Placed at Job Site:		\$	

Estimated monthly payment on 5 year lease

This price quote is good for 60 days from date below, and is accurate and complete.

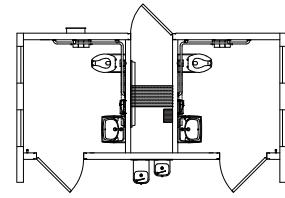
CXT Sales Representative _____ Date _____

I accept this quote. Please process this order.


 Company Name _____
 Company Representative _____ Date _____

DENALI – 10' 3" x 17' 2"

Denali with chase has two single user fully accessible flush restrooms. Standard features include simulated board and batt upper and Napa Valley rock lower textured walls, simulated cedar shake textured roof, vitreous china fixtures, interior and exterior lights, off loaded, and set up at site.



CXT
800.696.5766
cxtinc.com

*Base Price \$

OLM Sections

Restroom*	Qty: =	Shower*	Qty: =
Family Assist Shower/Restroom Combo*	Qty: =	Storage	Qty: =
Concession*	Qty: =		

*Includes 4-gallon water heater. Total for Optional Sections \$

OLM Items

OLM Items	Price per unit	Click to select
Final Connection to Utilities (per section)	\$	
Custom Wall Texture (per section)		
Optional Roof Texture (per section) Ribbed Metal	\$	
Insulation and Heaters (per section)	\$	
Stainless Steel Water Closet (each)	Qty: \$	
Stainless Steel Lavatory (each)	Qty: \$	
Electric Hand Dryer (each)	Qty: \$	
Electronic Flush Valve (each)	Qty: \$	
Electronic Lavatory Faucet (each)	Qty: \$	
Paper Towel Dispenser (each)	Qty: \$	
Toilet Seat Cover Dispenser (each)	Qty: \$	
Sanitary Napkin Disposal Receptacle (each)	Qty: \$	
Baby Changing Table (each)	Qty: \$	
Skylight in Restroom (each)	Qty: \$	
Marine Grade Skylight in Restroom (each)	Qty: \$	
Marine Package (excluding fiberglass doors, frames and front window frames) (per section)	\$	
Exterior Mounted ADA Drinking Fountain w/Cane Skirt (each)	Qty: \$	
2K Anti-Graffiti Coating (per section)	\$	
Optional Door Closure (each)	Qty: \$	
Fiberglass Entry and Chase Doors and Frames (each)	Qty: \$	
Timed Electric Lock System (2 doors- does not include chase door) (each)	Qty: \$	
Exterior Frostproof Hose Bib with Box (each)	Qty: \$	
Total for Added Cost Options:		\$
Custom Options:		\$
Engineering and State Fees:		\$
Estimated One-Way Transportation Costs to Site (quote):		\$
Estimated Tax:		\$
Total Cost per Unit Placed at Job Site:		\$


Estimated monthly payment on 5 year lease

Disclaimer: Please call to confirm selected sections are compatible.

This price quote is good for 60 days from date below, and is accurate and complete.

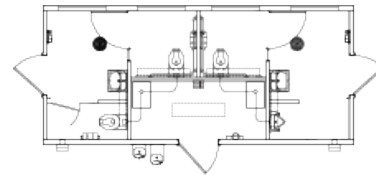
CXT Sales Representative _____ Date _____

I accept this quote. Please process this order.


Company Name _____
Date _____

KODIAK – 10' 6" x 23' 8"

Kodiak with chase has two multiuser fully accessible flush restrooms. Standard features include simulated barnwood textured walls, simulated cedar shake textured roof, vitreous china fixtures, 4-gallon water heater, interior and exterior lights, off loaded, and set up at site.



CXT
800.696.5766
cxtinc.com

		Price Per Unit	
Base Price		\$	\$
OLM Items		Click to Select	
Final Connection to Utilities		\$	
Optional Wall Texture- <i>choose one</i>	Split Face Block Stone		
Optional Roof Texture	Ribbed Metal	\$	
Stainless Steel Water Closet (each)	Qty:	\$	
Stainless Steel Lavatory (each)	Qty:	\$	
Stainless Steel Urinal (each)	Qty:	\$	
Electric Hand Dryer (each)	Qty:	\$	
Electronic Flush Valve (each)	Qty:	\$	
Electronic Lavatory Faucet (each)	Qty:	\$	
Electronic Urinal Valve (each)	Qty:	\$	
Paper Towel Dispenser (each)	Qty:	\$	
Toilet Seat Cover Dispenser (each)	Qty:	\$	
Sanitary Napkin Disposal Receptacle (each)	Qty:	\$	
Baby Changing Table (each)	Qty:	\$	
Skylight in Restroom (each)	Qty:	\$	
Marine Grade Skylight in Restroom (each)	Qty:	\$	
Marine Package (<i>excluding fiberglass doors and frames</i>)		\$	
Exterior Mounted ADA Drinking Fountain w/Cane Skirt (each)	Qty:	\$	
2K Anti-Graffiti Coating		\$	
Optional Door Closure (each)	Qty:	\$	
Fiberglass Entry and Chase Doors and Frames (each)	Qty:	\$	
Timed Electric Lock System (2 doors- does not include chase door) (each)	Qty:	\$	
Exterior Frostproof Hose Bib with Box (each)	Qty:	\$	
Total for Added Cost Options:		\$	
Custom Options:		\$	
Engineering and State Fees:		\$	
Estimated One-Way Transportation Costs to Site (quote):		\$	
Estimated Tax:		\$	
Total Cost per Unit Placed at Job Site:		\$	

Estimated monthly payment on 5 year lease



This price quote is good for 60 days from date below, and is accurate and complete.

I accept this quote. Please process this order.

Company Name

CXT Sales Representative

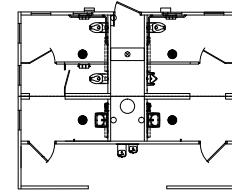
Date

Company Representative

Date

MONTROSE w/PRIVACY SCREEN – 15' 8" x 26' 4"

Montrose with privacy screen and chase has two multiuser fully accessible flush restrooms. Standard features include simulated barnwood textured walls, simulated cedar shake textured roof, vitreous china fixtures, 30-gallon water heater, interior and exterior lights, off loaded, and set up at site.




CXT
800.696.5766
cxtinc.com

		Price Per Unit	
Base Price		\$	\$
Added Cost Open Market Options		Click to Select	
Final Connection to Utilities (per section)		\$	
Optional Wall Texture (per section) - <i>choose one</i>	Split Face Block Stone		
Optional Roof Texture (per section)	Ribbed Metal	\$	
"Front Porch" Style Privacy Screen		\$	
Insulation and Heaters (per section)		\$	
Stainless Steel Water Closet (each)	Qty:	\$	
Stainless Steel Lavatory (each)	Qty:	\$	
Stainless Steel Urinal (each)	Qty:	\$	
Electric Hand Dryer (each)	Qty:	\$	
Electronic Flush Valve (each)	Qty:	\$	
Electronic Lavatory Faucet (each)	Qty:	\$	
Electronic Urinal Flush Valve (each)	Qty:	\$	
Paper Towel Dispenser (each)	Qty:	\$	
Toilet Seat Cover Dispenser (each)	Qty:	\$	
Sanitary Napkin Disposal Receptacle (each)	Qty:	\$	
Baby Changing Table (each)	Qty:	\$	
Skylight in Restroom (each)	Qty:	\$	
Marine Grade Skylight in Restroom (each)	Qty:	\$	
Marine Package (<i>excluding fiberglass doors and frames</i>) (per section)		\$	
Exterior Mounted ADA Drinking Fountain w/Cane Skirt (each)	Qty:	\$	
2K Anti-Graffiti Coating (per section)		\$	
Optional Door Closure (each)	Qty:	\$	
Fiberglass Entry and Chase Doors and Frames (each)		Qty:	\$
Timed Electric Lock System (2 doors- does not include chase door) (each)		Qty:	\$
Exterior Frostproof Hose Bib with Box (each)		Qty:	\$
Total for Added Cost Options:		\$	
Custom Options:		\$	
Engineering and State Fees:		\$	
Estimated One-Way Transportation Costs to Site (quote):		\$	
Estimated Tax:		\$	
Total Cost per Unit Placed at Job Site:		\$	

Estimated monthly payment on 5 year lease

This price quote is good for 60 days from date below, and is accurate and complete.

CXT Sales Representative _____ Date _____



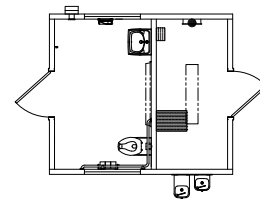
I accept this quote. Please process this order.

Company Name _____

Company Representative _____ Date _____

OZARK I – 10' 6" x 12'

Ozark I with chase has one single user fully accessible flush restroom. Standard features include simulated barnwood textured walls, simulated cedar shake textured roof, vitreous china fixtures, 4-gallon water heater, interior and exterior lights, off loaded, and set up at site.



CXT
800.696.5766
cxtinc.com

		Price Per Unit	
Base Price		\$	\$
OLM Items			Click to Select
Final Connection to Utilities		\$	
Optional Wall Texture - <i>choose one</i>	Split Face Block Stone		
Optional Roof Texture	Ribbed Metal	\$	
Insulation and Heater		\$	
Vitreous China Urinal		\$	
Stainless Steel Water Closet & Lavatory		\$	
Stainless Steel Urinal		\$	
Electric Hand Dryer		\$	
Electronic Flush Valve		\$	
Electronic Lavatory Faucet		\$	
Electronic Urinal Flush Valve		\$	
Paper Towel Dispenser		\$	
Toilet Seat Cover Dispenser		\$	
Sanitary Napkin Disposal Receptacle		\$	
Baby Changing Table		\$	
Skylight in Restroom		\$	
Marine Grade Skylight in Restroom		\$	
Marine Package (<i>excluding fiberglass doors and frames</i>)		\$	
Exterior Mounted ADA Drinking Fountain w/Cane Skirt		\$	
2K Anti-Graffiti Coating		\$	
Optional Door Closure		\$	
Fiberglass Entry and Chase Doors and Frames (each)		\$	
Timed Electric Lock System (2 doors- does not include chase door) (each)		\$	
Exterior Frostproof Hose Bib with Box		\$	
		Total for Added Cost Options:	\$
Custom Options:			\$
		Engineering and State Fees:	\$
		Estimated One-Way Transportation Costs to Site (quote):	\$
		Estimated Tax:	\$
		Total Cost per Unit Placed at Job Site:	\$

Estimated monthly payment on 5 year lease

This price quote is good for 60 days from date below, and is accurate and complete.

CXT Sales Representative _____ Date _____

I accept this quote. Please process this order.

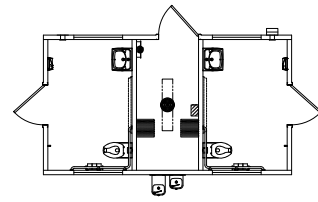
Company Name _____

Company Representative _____ Date _____



OZARK II – 10' 6" x 18' 8"

Ozark II with chase has two single user fully accessible flush restrooms. Standard features include simulated barnwood textured walls, simulated cedar shake textured roof, vitreous china fixtures, 4-gallon water heater, interior and exterior lights, off loaded, and set up at site.



CXT
800.696.5766
cxtinc.com

		Price Per Unit	
Base Price		\$	\$
OLM Items		Click to Select	
Final Connection to Utilities		\$	
Optional Wall Texture- <i>choose one</i>	Split Face Block Stone		
Optional Roof Texture	Ribbed Metal	\$	
Insulation and Heater		\$	
Vitreous China Urinal (each)	Qty:	\$	
Stainless Steel Water Closet (each)	Qty:	\$	
Stainless Steel Lavatory (each)	Qty:	\$	
Stainless Steel Urinal (each)	Qty:	\$	
Electric Hand Dryer (each)	Qty:	\$	
Electronic Flush Valve (each)	Qty:	\$	
Electronic Lavatory Faucet (each)	Qty:	\$	
Electronic Urinal Flush Valve (each)	Qty:	\$	
Paper Towel Dispenser (each)	Qty:	\$	
Toilet Seat Cover Dispenser (each)	Qty:	\$	
Sanitary Napkin Disposal Receptacle (each)	Qty:	\$	
Baby Changing Table (each)	Qty:	\$	
Skylight in Restroom (each)	Qty:	\$	
Marine Grade Skylight in Restroom (each)	Qty:	\$	
Marine Package (<i>excluding fiberglass doors and frames</i>)		\$	
Exterior Mounted ADA Drinking Fountain w/Cane Skirt (each)	Qty:	\$	
2K Anti-Graffiti Coating		\$	
Optional Door Closure (each)	Qty:	\$	
Fiberglass Entry and Chase Doors and Frames (each)		Qty:	\$
Timed Electric Lock System (2 doors- does not include chase door) (each)		\$	
Exterior Frostproof Hose Bib with Box (each)	Qty:	\$	
Total for Added Cost Options:			\$
Custom Options:			\$
Engineering and State Fees:			\$
Estimated One-Way Transportation Costs to Site (quote):			\$
Estimated Tax:			\$
Total Cost per Unit Placed at Job Site:			\$

Estimated monthly payment on 5 year lease

This price quote is good for 60 days from date below, and is accurate and complete.

CXT Sales Representative

Date

I accept this quote. Please process this order.

Company Name

Company Representative

Date



SANTIAGO

Custom building where you can match sections to meet your needs. Sections include restroom, shower, concession, storage, and combination configurations. Standard features include simulated barnwood textured walls, simulated cedar shake textured roof, vitreous china fixtures, interior and exterior lights, off loaded, and set up at site.



CXT[®]
800.696.5766
cxtinc.com

OLM Sections

Restroom*	Qty: =	Shower*	Qty: =
Family Assist Restroom*	Qty: =	Concession*	Qty: =
Family Assist Shower*	Qty: =	Multiuser Room	Qty: =
			Total Sections \$

*Includes 4-gallon water heater.

OLM Items

	Price per unit	Click to select
Final Connection to Utilities (per section)	\$	
Optional Wall Texture (per section) - <i>choose one</i>	Split Face Block (\$5,500) Stone (\$7,000)	
Optional Roof Texture (per section)	Ribbed Metal	
Porch/Wing Wall	\$	
Insulation and Heaters (per section)	\$	
Stainless Steel Water Closet (each)	Qty: \$	
Stainless Steel Lavatory (each)	Qty: \$	
Stainless Steel Urinal (each)	Qty: \$	
Electric Hand Dryer (each)	Qty: \$	
Electronic Flush Valve (each)	Qty: \$	
Electronic Lavatory Faucet (each)	Qty: \$	
Electronic Urinal Flush Valve (each)	Qty: \$	
Paper Towel Dispenser (each)	Qty: \$	
Toilet Seat Cover Dispenser (each)	Qty: \$	
Sanitary Napkin Disposal Receptacle (each)	Qty: \$	
Baby Changing Table (each)	Qty: \$	
Skylight in Restroom (each)	Qty: \$	
Marine Grade Skylight in Restroom (each)	Qty: \$	
Marine Package (excluding fiberglass doors and frames) (per section)	\$	
Exterior Mounted ADA Drinking Fountain w/Cane Skirt (each)	Qty: \$	
2K Anti-Graffiti Coating (per section)	\$	
Optional Door Closure (each)	Qty: \$	
Fiberglass Entry and Chase Doors and Frames (each)	Qty: \$	
Timed Electric Lock System (does not include chase door) (each)	Qty: \$	
Exterior Frostproof Hose Bib with Box (each)	Qty: \$	
Total for Added Cost Options:		\$
Custom Options:		\$
Engineering and State Fees:		\$
Estimated One-Way Transportation Costs to Site (quote):		\$
Estimated Tax:		\$
Total Cost per Unit Placed at Job Site:		\$

Estimated monthly payment on 5 year lease

Disclaimer: Please call to confirm selected sections are compatible.

This price quote is good for 60 days from date below, and is accurate and complete.

CXT Sales Representative _____ Date _____

I accept this quote. Please process this order.

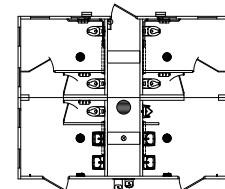
Company Name _____

Company Representative _____ Date _____



TAOS – 20' X 26'

Taos with chase has two multiuser fully accessible flush restrooms. Standard features include simulated barnwood textured walls, simulated cedar shake textured roof, vitreous china fixtures, 30-gallon water heater, interior and exterior lights, off loaded, and set up at site.



CXT
800.696.5766
cxtinc.com

			Price Per Unit	
Base Price			\$	\$
OLM Items			Click to Select	
Final Connection to Utilities (per section)			\$	
Optional Wall Texture (per section) - <i>choose one</i>	Split Face Block	Stone		
Optional Roof Texture (per section)	Ribbed Metal		\$	
Insulation and Heaters (per section)			\$	
Stainless Steel Water Closet (each)	Qty:		\$	
Stainless Steel Lavatory (each)	Qty:		\$	
Stainless Steel Urinal (each)	Qty:		\$	
Electric Hand Dryer (each)	Qty:		\$	
Electronic Flush Valve (each)	Qty:		\$	
Electronic Lavatory Faucet (each)	Qty:		\$	
Electronic Urinal Flush Valve (each)	Qty:		\$	
Paper Towel Dispenser (each)	Qty:		\$	
Toilet Seat Cover Dispenser (each)	Qty:		\$	
Sanitary Napkin Disposal Receptacle (each)	Qty:		\$	
Baby Changing Table (each)	Qty:		\$	
Skylight in Restroom (each)	Qty:		\$	
Marine Grade Skylight in Restroom (each)	Qty:		\$	
Marine Package (<i>excluding fiberglass doors and frames</i>) (per section)			\$	
Exterior Mounted ADA Drinking Fountain w/Cane Skirt (each)	Qty:		\$	
2K Anti-Graffiti Coating (per section)			\$	
Optional Door Closure (each)	Qty:		\$	
Fiberglass Entry and Chase Doors and Frames (each)			Qty:	\$
Timed Electric Lock System (2 doors- does not include chase door) (each)			Qty:	\$
Exterior Frostproof Hose Bib with Box (each)			Qty:	\$
Total for Added Cost Options:			\$	
Custom Options:			\$	
Engineering and State Fees:			\$	
Estimated One-Way Transportation Costs to Site (quote):			\$	
Estimated Tax:			\$	
Total Cost per Unit Placed at Job Site:			\$	

Estimated monthly payment on 5 year lease



This price quote is good for 60 days from date below, and is accurate and complete.

I accept this quote. Please process this order.

Company Name

CXT Sales Representative

Date

Company Representative

Date

OPTIONS

Exterior Color(s) (For single color mark an X. For two-tone combinations use W = Walls and R = Roof.)

<input type="checkbox"/> Amber Rose	<input type="checkbox"/> Berry Mauve	<input type="checkbox"/> Buckskin	<input type="checkbox"/> Cappuccino Cream
<input type="checkbox"/> Charcoal Grey	<input type="checkbox"/> Coca Milk	<input type="checkbox"/> Evergreen	<input type="checkbox"/> Georgia Brick
<input type="checkbox"/> Golden Beige	<input type="checkbox"/> Granite Rock	<input type="checkbox"/> Hunter Green	<input type="checkbox"/> Java Brown
<input type="checkbox"/> Liberty Tan	<input type="checkbox"/> Malibu Taupe	<input type="checkbox"/> Mocha Caramel	<input type="checkbox"/> Natural Honey
<input type="checkbox"/> Nuss Brown	<input type="checkbox"/> Oatmeal Buff	<input type="checkbox"/> Pueblo Gold	<input type="checkbox"/> Raven Black
<input type="checkbox"/> Rich Earth	<input type="checkbox"/> Rosewood	<input type="checkbox"/> Sage Green	<input type="checkbox"/> Salsa Red
<input type="checkbox"/> Sand Beige	<input type="checkbox"/> Sun Bronze	<input type="checkbox"/> Toasted Almond	<input type="checkbox"/> Western Wheat

Special roof color # _____ Special wall color # _____

Special trim color # _____

Stone Color(Mark option with an X.)

<input type="checkbox"/> Basalt	<input type="checkbox"/> Mountain Blend	<input type="checkbox"/> Natural Grey	<input type="checkbox"/> Romana
---------------------------------	---	---------------------------------------	---------------------------------

Roof Texture

Ribbed Metal

Wall Texture(s) (For single texture mark an X. For top and bottom textures use T = Top and B = Bottom.)

<input type="checkbox"/> Split Face Block	<input type="checkbox"/> Horizontal Lap	<input type="checkbox"/> Board & Batt	<input type="checkbox"/> Stucco
<input type="checkbox"/> Brick	<input type="checkbox"/> Distressed Wood		

Stone Wall Texture(bottom texture only)

<input type="checkbox"/> Napa Valley	<input type="checkbox"/> River Rock	<input type="checkbox"/> Flagstone	<input type="checkbox"/> Stacked Rock
--------------------------------------	-------------------------------------	------------------------------------	---------------------------------------

Door Opener

Non-locking ADA Handle

Privacy ADA Latch

Pull Handle/Push Plate

Deadbolt

Accessible Signage

Men

Women

Unisex

Toilet Paper Holder

2-Roll Stainless Steel

3-Roll Stainless Steel

Notes:

cxtinc.com
800.696.5766

